

# THE OPEN UNIVERSITY OF TANZANIA



## FACULTY OF ARTS AND SOCIAL SCIENCES HANDBOOK



**Academic year  
2022/2023**

# THE OPEN UNIVERSITY OF TANZANIA



## FACULTY OF ARTS AND SOCIAL SCIENCES

### HANDBOOK

**2022/2023**

The Open University of Tanzania,  
Kawawa Road, Kinondoni Municipality,  
P. O. Box 23409  
Dar es Salaam  
Tanzania.  
Office Tel Direct: +255 22 2668835  
Fax: +255(0)22-2668759  
E-mail: [dfass@out.ac.tz](mailto:dfass@out.ac.tz)  
Website: <http://www.out.ac.tz/fass/>

## **Prologue**

Welcome to the Faculty of Arts and Social Sciences at The Open University of Tanzania (OUT). This Handbook has been designed to orient you to the Faculty of Arts and Social Sciences. Hence, it provides a brief introduction to the OUT, outlines important faculty policies and procedures, provides information about resources available, and directs students to the location of other resources. It also contains information on academic development opportunities to help prospective students find and make good choices in their academic careers. Finally, it is a source of information to look back on throughout the year for continuing students.

Comments or suggestions for matters that might be amended or usefully covered in subsequent editions of this booklet would be welcome. Kindly send them to: [dfass@out.ac.tz](mailto:dfass@out.ac.tz)

## Preface



**Dr. Dunlop Ochieng**

**Dean, Faculty of Arts and Social Sciences**

It is my pleasure to present to you this year's handbook of the Faculty of Arts and Social Sciences (FASS), which among other things, is intended to create awareness of the faculty in all its core areas. The Faculty of Arts and Social Sciences is one of the 5 Faculties of The Open University of Tanzania. It is the oldest at The Open University of Tanzania. It first admitted students in 1994 when the University had its first enrollment. FASS is the largest faculty and prides itself in the wide range of courses and course combinations it offers at both undergraduate and postgraduate levels. Currently, the Faculty is staffed with about 85 permanent academic staff, of whom 5 are professors, 23 are PhD holders, 48 hold master's degrees, and 9 are tutorial assistants. The faculty has six academic departments, namely: the Department of Linguistics and Literary Studies (LLS), the Department of Sociology and Social work (SOSW), the Department of Economics and Community Development (ECED), the Department of Media and Library Studies (MLS), Department of Political Science, Public Administration, History and Philosophy (PSPAHP) and Department of Geography, Tourism and Hospitality Services (GTH). I hope that new as well as continuing students will utilize the information provided in this handbook to work hard in their studies. The handbook will also provide relevant FASS-specific information that complements the main OUT prospectus, which various stakeholders will find most relevant.

Of course, no handbook can cover every possible detail. In this regard, if you have any queries or need clarification on any issue concerning FASS programmes, your first point of contact is the staff in the faculty – who are always happy to help you, in particular, Ms. Zitha Kessy and Ms. Celia Muyinga who are found in Block C, First Floor, Left Wing, and Right Wing, respectively. Each programme also has a coordinator whose job is to deal with queries that cannot be resolved by the Faculty of Arts and Social Sciences in its general sense (their contacts are provided in this handbook). Nonetheless, personal matters should be discussed with your course instructor in person. Be sure to note the e-mail addresses and office hours of both the coordinator for your programme and your course instructor. Let me end my introductory remarks by expressing my gratitude to all individuals who have made the production of this handbook possible. The handbook is available in both hard copies and in an electronic copy on our website ([www.out.ac.tz/fass/](http://www.out.ac.tz/fass/)).

I wish you all the best in the 2022/2023 academic year.

A handwritten signature in blue ink, appearing to read 'D. Ochieng'.

Dr. Dunlop Ochieng  
Dean, FASS

## Table of Contents

Prologue .....	i
Preface .....	ii
Table of Contents .....	iii
<b>PART ONE: INTRODUCING THE FACULTY OF ARTS AND SOCIAL SCIENCES .....</b>	<b>1</b>
Background information .....	1
FASS Vision .....	1
FASS Mission.....	1
FASS Organization Structure.....	2
Faculty Administration.....	3
<b>PART TWO: UNDERGRADUATE AND NON-DEGREE PROGRAMMES .....</b>	<b>5</b>
Who's Eligible for Direct Enrolment in FASS Programmes? .....	5
How Should a Student Approach the Programme as a Whole? .....	5
What about Exams? .....	5
Which Code Stands for What, and How do I Choose Subjects? .....	5
Bachelor's Degree Programmes .....	6
Reading Materials and Library Services .....	6
Online Teaching and Interactions .....	6
<b>Department of Economics and Community Development (ECED) .....</b>	<b>7</b>
Bachelor of Arts in Economics (BA Econ).....	7
Diploma in Monitoring & Evaluation .....	7
Development Studies .....	8
Bachelor of Community Economic Development (BCED) .....	8
Certificate in Monitoring & Evaluation .....	10
<b>Department of Linguistics and Literary Studies .....</b>	<b>10</b>
Bachelor of Arts in English Language and Linguistics (BA ELL) .....	10
Bachelor of Arts in Literature (BALIT) .....	11
Bachelor of Arts in Kiswahili and Creative Studies (BA KISW) .....	12
<b>Department of Geography, Tourism and Hospitality Services .....</b>	<b>14</b>
Bachelor of Arts in Natural Resources Management (BA NRM) .....	14
Bachelor of Arts in Population and Development (BAPD) .....	15
Bachelor of Arts in Tourism Management (BTM) .....	16
<b>Department of Political Science, Public Administration, History and Philosophy .....</b>	<b>18</b>
Bachelor of Arts in History (BA HIST) .....	18
Bachelor of Arts in Public Administration (BAPA) .....	19
Bachelor of Arts in International Relations (BAIR) .....	20
<b>Department of Sociology and Social Work .....</b>	<b>21</b>
Bachelor of Arts in Sociology (BASO).....	21
Bachelor of Social Work (BSW) .....	23
Non-Degree Programme (Certificate and Diploma in Social Work .....	23
NTA Level 4: Semester I .....	24
NTA Level 4: Semester II .....	24
NTA Level 5: Semester 1 .....	24
NTA Level Six: Semester 1 .....	25
<b>Department of Media and Library Studies .....</b>	<b>26</b>
Bachelor of Arts in Journalism (BA Journalism) .....	26
Bachelor of Arts in Mass Communication (BA Mass Comm) .....	27
Bachelor of Library and Information Management (BLIM) .....	28
<b>PART THREE: POSTGRADUATE PROGRAMMES .....</b>	<b>31</b>
Master's Degree Programmes .....	31
Postgraduate Diploma Programmes .....	31
Admission Requirements .....	31
Delivery Modes for Master's Programmes by Coursework.....	31
Programme Structure and Assessment .....	31
Face-to-Face Sessions .....	32
Duration of Programmes and Tuition Fees .....	32
Master of Arts in Governance and Leadership (MAGL).....	32

Master of Arts in International Cooperation and Development (MICD) .....	33
Masters of Humanitarian Action, Cooperation and Development (MHACD) .....	33
Master of Science in Economics (MSc Econ) .....	33
Master of Arts in Monitoring and Evaluation (MA M&E) .....	34
Master of Community Economic Development (MCED) .....	34
Master of Arts in History (MA History) .....	34
Master of Arts in Kiswahili .....	35
Master of Arts in Natural Resource Assessment and Management (MA NRAM) .....	35
Master in Tourism Planning Management (MTPM) .....	36
Master of Social Work (MSW) .....	36
Master of Arts in Gender Studies (MA GS) .....	36
Postgraduate Diploma in Social Work (PGDSW) .....	37
Master of Arts in Mass Communication (MA MC) .....	37
Master in Library & Information Management (MLIM) .....	37
Doctor of Philosophy Degree (PhD) .....	38
How does an aspirant register for a PhD? And for how long does it last? .....	38
<b>PART FOUR: LIST OF FASS STAFF .....</b>	<b>40</b>
Dean's Office .....	40
Faculty Examination Officers .....	40
Faculty Planners .....	40
Faculty Quality Assurance Coordinator .....	40
Faculty Consultancy and Community Outreach .....	40
Administrative Staff .....	40
Department of Economics and Community Economic Development Staff .....	40
Department of Political Science, Public Administration, History and Philosophy Staff .....	41
Department of Linguistics and Literary Studies .....	42
Department of Geography, Tourism and Hospitality Services .....	42
Department of Media Studies and Library Services Staff .....	43
Department of Sociology and Social Work .....	44
FASS almanack .....	46
FASS Programmes Fees .....	47

# **Part One**

## **Introducing the Faculty of Arts and Social Sciences**

### **Background information**

Tracing its origins back in 1992, the Faculty of Arts and Social Sciences (FASS) deserves a claim to be Open University of Tanzania's oldest faculty. The Open University of Tanzania (OUT) is an open and distance learning institution offering certificates, diplomas, degrees and postgraduate courses. Education delivery is attained through various means of communication such as broadcasting, telecasting, information and communication technologies, correspondence, enhanced face-to-face, seminars and contact programmes. It is a vibrant, lively and supporting intellectual community with a diverse student body committed to academic excellence. The University extends learning access beyond the traditional full-time residential student body, hence making it the first of its kind in East Africa.

The faculty has six academic departments, namely:

1. Department of Linguistics and Literary Studies (LLS)
2. Department of Sociology and Social work (SOSW)
3. Department of Economics and Community Development (ECED)
4. Department of Media and Library Studies (MLS)
5. Department of Political Science, Public Administration, History and Philosophy (PSPAHP)
6. Department of Geography, Tourism and Hospitality Services (GTH)

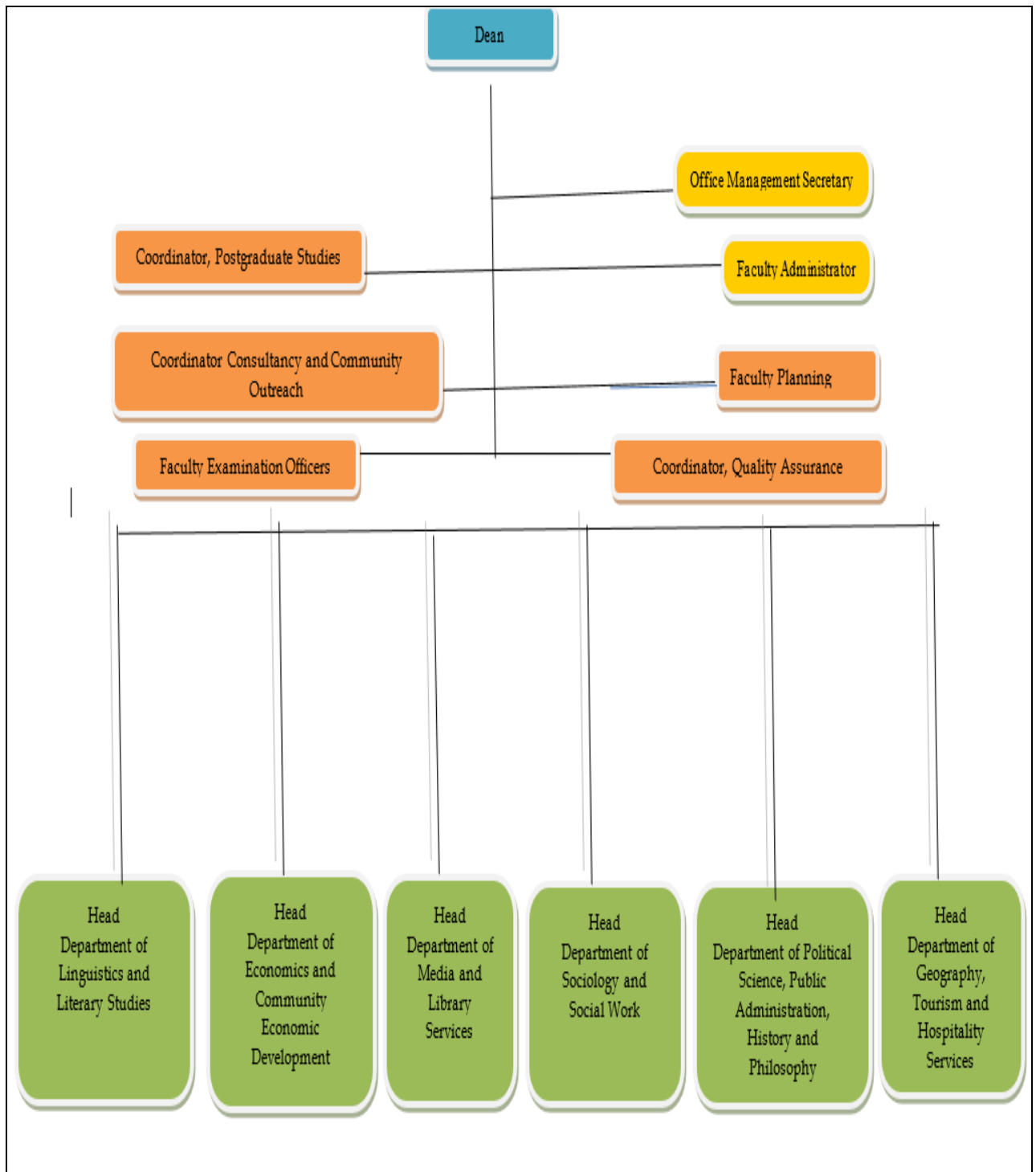
### **FASS Vision**

The Faculty of Arts and Social Sciences embraces the teaching, research, creative activities and service objectives of The Open University of Tanzania. Thus FASS is committed to: providing its students with affordable high quality education in an atmosphere that promotes intellectual vigor, critical inquiry, citizenship and creative decision-making requisites for personal growth and professional success; encouraging exemplary scholarship of teaching, research and service, leading to significant publications and performances; and transforming lives by creating and promoting opportunities for lifelong and flexible learning in order to match up with evolving local and global challenges.

### **FASS Mission**

The aim of FASS is to create and disseminate knowledge through teaching, learning, research and professional practice. It is committed to helping students achieve the highest academic standards. The faculty is dedicated to the fundamental principle that the role of higher education is to develop and nurture a creative, civil and life-sustaining society. Hence, its programmes promote civic engagement, examine our world and envision future possibilities.

## FASS Organization Structure





## Faculty Administration

### Dean's office

Dean: **Dr. Dunlop Ochieng**

Direct Line: +255 22 2668835

Mobile: +255 684053363

E-mail: [dunlop.ochieng@out.ac.tz](mailto:dunlop.ochieng@out.ac.tz)

Coordinator of FASS Postgraduate Studies: **Dr. Ladislaus Batinoluho**

Mobile: +0714700188; E-mail: [ladislaus.batinoluho@out.ac.tz](mailto:ladislaus.batinoluho@out.ac.tz)

Faculty Examination Officer

**1. Mr. Alexander Ndibalema**

Mobile: +255717937935; E-mail: [alexander.ndibalema@out.ac.tz](mailto:alexander.ndibalema@out.ac.tz)

**2. Mr. Vincent Mpepo**

Mobile: +255755782983; E-mail: [vincent.mpepo.julius@out.ac.tz](mailto:vincent.mpepo.julius@out.ac.tz)

Faculty Planner: **Mr. Manning Yusuph**

Mobile: +255714742485; Email: [manning.yusuph@out.ac.tz](mailto:manning.yusuph@out.ac.tz)

Faculty Quality Assurance Coordinator: **Ms. Celia Muyinga**

Mobile: +255759803818; Email: [celia.muyinga@out.ac.tz](mailto:celia.muyinga@out.ac.tz)

Faculty Consultancy and Community Outreach Coordinator: **Dr. Theresia Mugobi**

Mobile: +255757160110; Email: [theresia.mugobi@out.ac.tz](mailto:theresia.mugobi@out.ac.tz)

Faculty Administrator: **Ms. Nuru Abdallah**

Mobile: +255758372355; E-mail: [nuru.abdallah@out.ac.tz](mailto:nuru.abdallah@out.ac.tz)

Faculty Office Management Secretary: **Ms. Zitha Kessy**

Mobile: +255719068385; E-mail: [zitha.kessy@out.ac.tz](mailto:zitha.kessy@out.ac.tz)

### Heads of Departments

Dept/Centre	Name	Email	Mobile
Dean	Dr. Dunlop Ochieng	<a href="mailto:dunlop.ochieng@out.ac.tz">dunlop.ochieng@out.ac.tz</a>	0684053363
Department of Linguistics and Literary Studies (LLS)	Dr. Zelda Elisifa	<a href="mailto:zelda.elisifa@out.ac.tz">zelda.elisifa@out.ac.tz</a>	0623134276
Department of Sociology and Social work (SOSW)	Dr. Mariana Makuu	<a href="mailto:mariana.makuu@out.ac.tz">mariana.makuu@out.ac.tz</a>	0716211283
Department of Economics and Community Development (ECED)	Dr. Emmanuel Nyankweli	<a href="mailto:emmanuel.nyankweli@out.ac.tz">emmanuel.nyankweli@out.ac.tz</a>	0758177202
Department of Media and Library Studies (MLS)	Dr. Henry Mambo	<a href="mailto:henry.mambo@out.ac.tz">henry.mambo@out.ac.tz</a>	0754770325
Department of Political Science, Public Administration, History and Philosophy (PSPAHP)	Dr. Jacob Lisakafu	<a href="mailto:jacob.lisakafu@out.ac.tz">jacob.lisakafu@out.ac.tz</a>	0768089044
Department of Geography, Tourism and Hospitality Services (GTH)	Dr. Halima Kilungu	<a href="mailto:halima.kilungu@out.ac.tz">halima.kilungu@out.ac.tz</a>	0755931975

### Coordinators of Academic Programmes

S/N	Department	Programme	Coordinator	Phone No./mail
1.	Media and Library Studies	Library Studies	Mr. Aziz Kagugu	0762512521
2.	Sociology and Social Work	Bachelor of Social Work (BSW)	Alexander Ndibalema	0752 605332
		Bachelor of Arts in Sociology (BASO)	Dr. Straton Ruhinda	0784697834
		NTA Level 4,5and 6	Dr. Fauzia Mohamed	0782 374953

		(Certificate and Diploma in Social Work)		
3.	Linguistic and Literacy Studies	Linguistic courses	Mr. Moshi Masatu	0687885849
		Literature courses	Ms. Caroline	0656223661
		Kiswahili	Mr. Emmanuel Msangi	0767519226
		MA Kiswahili	Dr. Omary Maguo	0785259095
4.	Geography, Tourism and Hospitality Services	Bachelor of Tourism Management	Dr. Veronica Nyerere	0689 868027
		Non-degree Programme Tourism	Dr. Thereza Mugobi	0757 160110
		Bachelor of Natural Resources Management	Dr. Ruth John and Habiba Ally	0756650132
		Bachelor Population and Development	Dr. Anna Wawa	0754 430075
5.	ECED	M.Sc. Economics	Mr. Abdul Kilima	0788513483
		MCED	Ms. Janeth Gwimile	0785395454
		M&E	Ms. Janeth Gwimile	0785395454
			Mr. Henry Tumaini	0762411034
			Mr. Abdul Kilima	0788513483
		B.A - Economics	Mr. Godfrey Gradius	0754067357
		Diploma in M&E	Ms. Zakia Ituja	0716959300
		Certificate in M&E	Ms. Zakia Ituja	0716959300
BCED	Mr. Fidelis Kisusi	0713910438		
			Ms. Nanzia Toroka	0629245844
6.	Political Science, Public Administration, History and Philosophy (PSPAHP)	BAPA BAIR	Ahmed Mussa Revocatus Bin'Omukama	0714060617 0754204500

## Part Two

### Undergraduate and Non-degree Programmes

#### Who's Eligible for Direct Enrolment in FASS Programmes?

Those who have the following qualifications then are a suitable candidate to undertake our various undergraduate degree programmes:

- Two principal passes the Advanced Certificate of Secondary Education Examination (A.C.S.E.E.).
- Diploma holder with 3.0 GPA. The diploma must be of duration of two years period.
- An applicant who holds a one-year Foundation course from The Open University of Tanzania

#### How Should a Student Approach the Programme as a Whole?

You need to get to know as much as you can about your programme. You can find out through your Directors of Regional Centre (DRCs), the FASS website, your course outlines, or your instructors how your programme works. Do you need a certain grade to proceed to the following year? Does your choice of courses fit into what you might want to do later in the programme? When are the exams and how do they work? Being familiar with your programme from the beginning will save you time and worries later.

#### What about Exams?

Finding out the examination format, assessment criteria and when and where examinations take place might not be the first things you want to look into when you have just joined and are excited about learning more about your subjects in the first place. But it can be helpful to bear this information in mind. Have a look at past exam papers, which are in the hands of continuing students, to get an idea of what will be expected of you. Inquiring about previous examination reports can be even more revealing, as they will tell you exactly what students did well and what went wrong in the past. To register online for examinations, you have to visit the OUT webpage at: [www.out.ac.tz](http://www.out.ac.tz). The examination regulations apply from the first Level to the final Level of the undergraduate examinations in the faculty. Further examination regulation details are available online in the OUT Prospectus, which can be accessed at: <http://www.out.ac.tz/files/importInfo/prospectus%2019-2020.pdf>.

#### Which Code Stands for What, and How do I Choose Subjects?

Each subject starts with an "O" which stands for The Open University of Tanzania. It is followed by the subject alphabet and code numbers. The code numbers used will be in the series of 100 for Part One, 200 for Part Two and 300 for Part Three.

Following are the subject codes:

CED	-	Community Economic Development
ODS	-	Development Studies
OEC	-	Economics
OGE	-	Geography
OPD	-	Human Population and Development
OIR	-	International Relations
OLL	-	English Language and linguistics
ORM	-	Natural Resource Assessment and Management
OHI	-	History
OLL	-	English Language and Linguistics
OLT	-	Literature
OLM	-	Library and Information Management
OPR	-	Philosophy and Religious studies
OSW	-	Kiswahili
OPA	-	Public Administration
OPS	-	Political Science and Public Administration
OTS	-	Tourism Studies
OTM	-	Tourism Management
OSP	-	Social Work Studies
OSS	-	Sociology and Social Work Studies
OSPS	-	Social Psychology

OJO	-	Journalism
OMC	-	Mass Communication
FRA	-	French

The choice of course combination for The Open University of Tanzania Degree programme shall be approved by designated officers of the University. Note that any change in any subject combination will be made only in consultation with the designated officers of The Open University of Tanzania. Such changes will only be allowed before or during the first face-to-face session of the course and in exceptional cases, only in order to qualify for the award of a degree; a student is normally required to complete a minimum of 36 to 40 course units, depending on specific programme requirements. Further details about our programmes are also available in the OUT Prospectus at: <http://www.out.ac.tz/files/importInfo/prospectus%2018-2019.pdf>.

### **Bachelor's Degree Programmes**

At the undergraduate level, FASS currently offers 17 programmes through the Open and Distance Learning (ODL) mode of delivery. These include:

- Bachelor of Arts in Tourism Management
- Bachelor of Arts in Sociology
- Bachelor of Social Work
- Bachelor of Arts in Journalism
- Bachelor of Arts in Mass Communication
- Bachelor of Community Economic Development
- Bachelor of Arts in Economics
- Bachelor of Arts in Natural Resource Management
- Bachelor of Arts in Population and Development
- Bachelor of Arts in Literature
- Bachelor of Arts in Kiswahili and Creative Studies
- Bachelor of Arts in English Language and Linguistics
- Bachelor of Library Information Management
- Bachelor of Arts in History and Cultural Heritage
- Bachelor of Arts in Public Administration
- Bachelor of Arts in International Relations

### **Reading Materials and Library Services**

Studying for the degree requires students to engage with a mixture of printed and electronic resources. Some of these may be originally printed materials, now available to in electronic format – for example, downloads of journal articles or books. However, the degree is not simply e-learning in the sense that all the learning and activities take place as you sit at your computer. You will also be expected to visit libraries to research topics, and to obtain books, either through the university library or through purchasing your own copy of key texts. In view of the foregoing, the OUT Library offers state-of-the-art technology, vast collection of research and reading materials and specialized services. The main Library lies at the heart of the OUT Headquarters, while mini libraries are set in locations convenient to the staff and students in the regional centres. The library houses more than 200,000 printed volumes, while its virtual presence consists of bibliographic and full-text databases, online theses/ dissertations, e-books, open courseware, e-journals and a growing institutional digital repository, making it a gateway to a wealth of research and learning materials. It also makes an available online catalog of books available in the main library and in the regional centers. For more information about the library hours and services and access to the library resources, both on and off-campus, visit the OUT-Library website at: [www.out.ac.tz/library/](http://www.out.ac.tz/library/).

### **Online Teaching and Interactions**

We are progressively making use of a Virtual Learning Environment (VLE) called MOODLE (Modular Object-Oriented Dynamic Learning Environment). To access MOODLE platform, you will need to log into the relevant portal with your username and password. MOODLE is used for several purposes, such as downloading the relevant documents you will need as you study and keeping up with advancements in information and communication technology. You can also use it to contact other distance learners through the student forum. The instructors will be developing and updating the MOODLE resources as an on-going part of the programme development. Zoom lectures are currently

delivered for each knowledge area. Students are encouraged to attend online lecture sessions. Links for scheduled zoom lectures will be provided on the MOODLE platform.

## **Department of Economics and Community Development (ECED)**

ECED is comprised of two departments, namely Economics and Community Economic Development. The Economics department currently offers a BA general degree, while the Community Economic Development offers courses in development studies. Starting this academic year, CECED is offering two new undergraduate programs, namely BA Economics (BA ECON) and Bachelor of Community Economic Development (BCED). The details of the programme are as given below:

### **Bachelor of Arts in Economics (BA Econ)**

The main objective of the BA ECON programme is to enable students to demonstrate and develop the ability to critically evaluate and apply theories and techniques of economics.

#### **BA Econ Programme Structure**

A student is required to complete **36units** to qualify for a BA in Economics.

#### **Level I**

<b>Code</b>	<b>Course Title</b>
OEC 130	History of Economic Thought
OEC 131	Introduction to Microeconomics
OEC 132	Introduction to Macroeconomics
OEC 133	Basic mathematics and statistics for Economists
OEC 134	Social science Research methods
OFC 017	Communication Skills
OCP 100	Introduction to Computers
<b>Total Units</b>	

#### **Level II**

<b>Code</b>	<b>Course Title</b>
OEC 230	Intermediate Microeconomics
OEC 231	Intermediate Macroeconomics
OEC 232	Development Economics
OEC 233	Quantitative methods for Economists
OEC 234	Econometrics
OEC 235	Corporate Finance and Investments
<b>Total Units</b>	

#### **Level III**

<b>Code</b>	<b>Course Title</b>
OEC 330	Monetary Economics
OEC 331	International Economics
OEC 332	Public Economics
OEC 333	Industrial Economics
OEC 334	Labour Economics
OEC 335	Agricultural Economics
<b>Total Units</b>	

**NOTE:** Students must select at least ONE (1) elective course in level III to complete the total units required to graduate.

### **Diploma in Monitoring & Evaluation**

The main objective of the Diploma in M&E programme is to provide skills for understanding M&E systems, effective leading and management of evaluation teams in conducting data collection fieldwork

## Semester I Modules

S/N	Module Code	Module Title	Class	Credits	
1	OEC011	Fundamentals of Result based project management	C	20	
2	OEC012	M&E Principles and Approaches	C	20	
3	OEC013	M&E Planning and Implementation	C	20	
4	OFP020	Computer Skills	C	20	
5	OEC014	Applied Mathematics for Project	C	20	
<b>Total credits</b>				<b>100</b>	

## Semester II Modules

S/N	Module Code	Module Title	Class	Credits	
1	OEC021	Impact Evaluation Methods	C	20	
2	OEC022	Field Protocol and Report Writing	C	20	
3	OEC023	M&E in Public Sector	C	20	
4	OEC024	Evaluation Criteria and Techniques	C	20	
5	OEC025	Value for Money in M&E	C	20	
	OEC026	M&E Data Management and Systems	C	20	
	OEC199	Field Practical Attachment	C	40	
<b>Total credits</b>				<b>160</b>	

**Key:** F=Fundamental  
C= Core

## Development Studies

Development Studies courses are taken by all University students as optional courses. Students can take either's 202A Society, Technology and Environment (for the Humanities Bias Group) or ODS 202B Environment, Technology and Development (for the science bias Group). Students in the Faculty of Arts and Social Sciences, Faculty of Education and Faculty of Law comprise the Humanities Bias group, while those in the Faculty of Science, Technology and Environmental Studies constitute the Science bias group. The course structure is as indicated below

### Level One

Course Code	Course Title
ODS 101 A:	Concepts/Theories of Social Development
ODS 101 B:	Political Economy
ODS 101 C:	Political and Social Development in Africa
ODS 102 A: *	Issues in Development
ODS 102 B: *	Social Services and Development
OFC 017:	Communication Skills
OCP 100:	Introduction to Computer

### Level Two

Course Code	Course Title
ODS 201 A: *	Tanzania's Development Experience
ODS 201 B: *	Alternative Development strategies
ODS 202 A: *	Society, Technology and Environment (For Humanities only)
ODS 202 B:	Environment, Technology and Development (For Natural Sciences and Technology)

\* Courses not offered in this academic year.

## Bachelor of Community Economic Development (BCED)

Community Economic Development (CED) is a participatory process by which communities initiate and generate their own solutions to economic problems leading to positive concrete changes in communities through creating employment; stabilizing local economies; reducing poverty; contributing to the health of the natural environment; building local resources and capacities; and increasing

community control. CED is understood in its widest sense as an emerging, diverse field of practice accompanied by analysis of the social-economic context. The BCED programme seeks to provide a unique opportunity to students who wish to develop their career in CED

### Objectives of the Programme

The main objectives of the Bachelor of Community Economic Development are to:

- train Community Economic Development practitioners to work in the government, private sector and with communities.
- generate knowledge and information that will permit leaders in government, private sector and in communities to make informed decisions.
- encourage a high degree of local participation in making well informed economic choices.
- assist in building sustainable institutions that will assure equitable sharing of the benefits of those choices.
- build capacity among practitioners working with communities.
- equip students with sufficient knowledge, skills and attitude that will enable them to work competently as economists in the government, international organizations, financial sector, business sector, etc.

### Duration

The course shall be completed at least within three years in all modes. However, a student can extend to a maximum of up to eight years for a distance mode.

### Assessment Regulations

Students are assessed by a combination of timed tests and final examinations. The timed test comprises 30% while the final examination carries 70% making a total of 100%. The formal examinations and timed tests allow sufficient assessment and feedback to maintain intellectual rigour and provide an opportunity for individual improvement.

### Structure

The programme structure has three levels. Each level is equivalent to two academic years, assuming an average learner. Details of the courses at each level are provided in the table below:

Code	Title of the Course
CED 101	Principles of CED
CED 102	Economics for CED
OAF111	Principles of Accounting
OEC 133	Mathematics and Statistics for Economists
CED 103	SMEs and Development
OCP 100	Introduction to Computers
CED 201	Microfinance Management
CED 202	Resource Mobilization and Management for CED Projects
CED 203	Poverty Analysis and Intervention
CED 204	CED Project Management
CED 205	Organizational Management for CED
OME 312	Entrepreneurship and Business Planning
CED 301	Project Monitoring and Evaluation
CED 302	Community Needs Assessment
CED 303	Sustainable Responses to Environmental problems
CED 304	Development as a tool for Conflict Resolution *
OEC 305	Development Economics*
CED 305	Rural Livelihoods and Sustainable Development*
CED 306	Gender Issues in CED*

\*Candidate to select at least TWO of these courses

## Award

Upon completion and passing of all the courses, Community Needs Assessment (CNA) and field practical; a student will be awarded a Bachelor of Community Economic Development degree of The Open University of Tanzania.

## Programme Delivery

The programme will be delivered in Open Distance Learning Mode (ODL) as well as face-to-face evening mode. The academic year starts in September/October with an orientation week. During orientation, students will be provided with course outlines, study manuals and other guiding materials.

## Certificate in Monitoring & Evaluation

The aim of the Certificate course is to produce a cadre of technicians who can support M&E activities being undertaken by public/private sector organizations, local government, NGOs, individual sector experts, and practitioners. The course structure is as indicated below.

Module Code	Module Title	Status	TCU Credits
OEC 001	Introduction To Project Design and Management	Core	20
OEC 002	Introduction to M&E Framework	Core	20
OEC 003	Introduction To Research Methods and Statistics For M&E	Core	20
OEC 004	Preparation For Field Protocol	Core	20
OEC 005	Group Project	Core	40
OFP 017	Communication Skills	Compulsory	20
	<b>Total Credits</b>		<b>140</b>

## Department of Linguistics and Literary Studies

The Department of Linguistics and Literary Studies deals exclusively with language-oriented courses. To accomplish this purpose, the department has the following bachelor programs: Bachelor of English Language and Linguistics (BA ELL), Bachelor of Kiswahili and Creative Studies (BA KISW) and Bachelor of Arts in Literature (BALIT).

### Bachelor of Arts in English Language and Linguistics (BA ELL)

This programme aims to introduce students to the nature, structure, and uses of language and develop an understanding of descriptive and applied linguistic knowledge. Candidates are required to take at least 36 units.

#### Programme Organization

**Level I** The candidate shall take all core courses and one elective, making a total of 12 units

	Course name
OLL 131	Introduction to Language and Linguistics
OLL 132	English Structure
OLL 133*	Introduction to Functional Grammar
OLL 134	Language in Contact
OLL 135	Language Acquisition Theories
OLL 136	History and Development of English Language
OFC 017	Communication Skills
OCP 100	Introduction to Computer

**Level II** The candidate shall take all core courses and one elective, making a total of 12 units

Course code	Course name
OLL 231	Discourse Analysis
OLL 232	Morphology
OLL 233	Introduction to Syntax
OLL 234	Historical and Comparative Linguistics
OLL 235	Phonetics and Phonology



OLL 236	Applied Linguistics
OLL 237	Translation Theory and Practice
OLL 238	Lexicography

**Level III** The candidate shall take all core courses and one elective, making a total of 12 units

Course code	Course name
OLL 331	Contemporary Linguistic Theories
OLL 332N	Language and Gender
OLL 333N	Sociolinguistics
OLL 334	Research Methodology
OLL 335N	Semantics and Pragmatics
OLL 336N	Advanced English Syntax

### **Bachelor of Arts in Literature (BALIT)**

The Bachelor of Literature Programme aims to provide a basic literature knowledge foundation and training in academic research and creative writing. It also prepares students for careers in academia, the general private sector, or publishing enterprises (or even to establish their own). It will enable students to contribute to research and literary output advancement.

#### **Level 1**

The Candidate shall study all core courses and one elective, making a total of 12 units

Course Codes	Course Title	TCU Credits	OUT Units	Status
OLT 131	Literary Theory and Criticism	20	2	Core
OLT 132	Studies In African Literatures	20	2	Core
OLT 133	Language and Literature	20	2	Core
OFC 017	Communication Skills	10	1	Core
OCP 100	Introduction to Computer	10	1	Core
<b>OLT 134</b>	Creative Writing for Fiction, Drama and Petry	20	2	Elective
OLT 135	Introduction to Drama	20	2	Elective
OLT 136	African Women Writers	20	2	Elective

#### **Level 2**

*The Candidate shall study all core courses and one elective making, making a total of 12 units*

Course Codes	Course Title	TCU Credits	OUT Units	Status
OLT 231	Literary Stylistics	20	2	Core
OLT 232	Poetry	20	2	Core
OLT 233	Folklore and Oral Literature	20	2	Core
OLT 234	Research Methodology	20	2	Core
OLT 235	Rise of the Novel	20	2	Core
OLT 236	Contemporary Trends in African Literature	20	2	Elective
OLT 237	Introduction to Film Studies	20	2	Elective

#### **Level 3**

*The Candidate shall study all core courses and two electives making, making a total of 12 units*

Course Codes	Course Title	TCU Credits	OUT Units	Status
OLT 331	Comparative Literature	20	2	Core
OLT 332	African American Literature	20	2	Core
OLT 333	Studies in European Literature	20	2	Core
OLT 334	Gender and Literature	20	2	Core
OLT 335	The Short Story	20	2	Elective

OLT 336	Research Project	20	2	Elective
OLT 325	Creative Writing Project	20	2	Elective

### **Bachelor of Arts in Kiswahili and Creative Studies (BA KISW)**

The Kiswahili and Creative Studies programme is divided into THREE levels: 100 series, 200 series and 300 series. At level 100 series, the courses acquaint students with both the background and other major linguistics and literary theories and the application of these theories in critically analyzing Kiswahili language and literary works. The two remaining Levels (200 -300 series) of the programme provide instruction on a more advanced level in a broad range of core subjects. They therefore enable a student to choose from a range of optional courses which might form the basis of specialization in their future career and studies. The programme is concluded by testing students' research skills. Those who scored B+ in research methodology (OSW 225) will be allowed to demonstrate their acquaintance with research methods and methodology by registering OSW 336 Research Project in Kiswahili. All candidates are required to take at least 36 OUT units which is equivalent to 360 TCU credits, each unit covering content materials equivalent to thirty-five one-hour lecture materials.

#### **Programme Organization**

**Level I: The candidate shall take all core courses, making a total of 10 units**

<b>Course Codes</b>	<b>Course Name</b>
OSW131	Introduction to language and linguistics
OSW 132	History of Kiswahili and Dialect
OSW133	Kiswahili Literature: Theories and Criticism
OSW134	Theory and Practice of Translation
OCP 100	Introduction to Computer
OFC 017	Communication Skills

**Level II: The candidate shall take all core courses and one elective making 14 units**

<b>Course Codes</b>	<b>Course Name</b>
OSW 231	Kiswahili Grammar and Syntax
OSW 232	Kiswahili Phonetics and Phonology
OSW 233	Kiswahili Morphology
OSW 234	Kiswahili Oral Literature
OSW 235	Research Methods in Language Studies
OSW 236	Kiswahili Semantics
OSW 237	Creative Writing and Screen Writing
OSW 238	Lexicography
OSW 239	Comparative Literature 2

**Level III: The candidate shall take all core courses and 2 electives making a total of 12 units**

<b>Course Codes</b>	<b>Course Name</b>
OSW331	Kiswahili Novels
OSW332	Kiswahili Drama
OSW333	Kiswahili Poetry
OSW334	Film Criticism
OSW335	Sociolinguistics
OSW336	Research Project in Kiswahili
OSW337	Literary Stylistics in Kiswahili

#### **BA Education Programme**

The department of Linguistics and Literary Studies will continue to teach language related core courses selected by BA ED not exceeding 16 units at all 3 levels.

#### **Linguistics**

### Level 1

Students taking Linguistics as a major subject must study all linguistics courses from this level, whereas those who take the course as a minor subject should take OLL 131 and 132 only.

### Level 2

B.A Education taking linguistics as a minor subject may take three core courses from the second year list one of which must be OLL 236. B.A Education students majoring in linguistics must take all core courses in the second year list one of which must be OLL 236.

### Level 3

All B.A Education students majoring in linguistics must take ALL core courses in the third year. However, the project will be done by students whose performance was above a 'B' grade in the second year. Those who did not attain an average of 'B' in the second year will have to choose two units from any elective course in the third-year list.

Course Codes	Course Title
OLT 131	Literary Theory and Criticism
OLT 132	Studies In African Literatures
OFC 017	Communication Skills
OCP 100	Introduction to Computer
<b>Level 2</b>	
OLT 221	Oral Literature I
OLT 222	Literary Stylistics
<b>Level 3</b>	
OLT 321	European Literature
OLT 322	African American Literature
OLT 323	Creative Writing
OLT 324	Dramatic – Theatrical Studies
OLT 325	Oral Literature II (Research project on literature)

### Kiswahili

1. *B. A. General* Students studying Kiswahili as a major subject will be required to study all the first-year units, and six units in the second year and four units in the third year of study.
2. *B. A. General* Students taking Kiswahili as a minor subject will be required to take all units in the first-year units, 6 units in the second year and 4 units in the third year.
3. *B. A. with Education* Students taking Kiswahili as a major subject will be required to study 4 core units in the first year, six in the second year and six in the third year.
4. *B. A. with Education* Students taking Kiswahili as a minor subject will have to take all core units, 4 in the first year, 2 in the second year and 2 in the third year.

### Kiswahili

1. *B. A. General* Students studying Kiswahili as a major subject will be required to study all the first-year units, six units in the second year and four units in the third year of study.
2. *B. A. General* Students taking Kiswahili as a minor subject will be required to take all units in the first-year units, 6 units in the second year and 4 units in the third year.
3. *B. A. with Education* Students taking Kiswahili as a major subject will be required to study 4 core units in the first year, six in the second year and six in the third year.
4. *B. A. with Education* Students taking Kiswahili as a minor subject will have to take all core units, 4 in the first year, 2 in the second year and 2 in the third year.

### Level 1

<b>Course Codes</b>	<b>Course Title</b>
OSW 131	Utangulizi wa Lugha na Isimu
OSW 132	Historia ya Kiswahili na Lahaja zake
OSW 133	Fasihi ya Kiswahili Nadharia na Uhakiki
OFC 017	Comunicación Skills
OCP 100	Introduction to Computer
<b>Level 2</b>	
<b>Course Codes</b>	
OSW 231	Sarufi ya Kiswahili na Sintaksia
OSW 232	Fonetiki na Fonolojia ya Kiswahili
OSW 233	Mofolojia ya Kiswahili
OSW 234	Fasihi Simulizi
OSW 225*	Isimu Tumizi
OSW 333	Ushairi wa Kiswahili
OSW 331	Riwaya ya Kiswahili
OSW 332	Tamthiliya ya Kiswahili
<b>Level 3</b>	
<b>Course Codes</b>	
OSW 335	Isimu Jamii
OSW 322	Kunga za Tafsiri na Semantikia kwenye kozi za B. A Kisw sijaiona hii kozi
OSW 323	Ubunifu Kwenye kozi za B.A Kisw sijaiona hii Kozi pia
OSW 336	Projekti ya Utafiti katika Kiswahili

\*Courses not offered in this academic year.

## **Department of Geography, Tourism and Hospitality Services**

The Department of Geography has three main undergraduate programmes: Bachelor of Arts in Natural Resource Management BA (NRM); Bachelor of Arts in Population and Development BA (PD) and Bachelor of Arts in Tourism Management. They are paralleled by old programmes which are offered by the Department in collaboration with education programs

### **Bachelor of Arts in Natural Resources Management (BA NRM)**

The Bachelor of Arts in Natural Resources Management (BA.NRM) focuses on the uses and development of resources, coupled with practical field experience, knowledge and skills necessary for meeting the challenges of sustainable use of natural resources. At the end of the programme, learners will be expected to have acquired competences in poverty analysis and social development planning. Ultimately the programme will produce competent professionals who can identify, plan and monitor the exploitation of natural resources.

### **Programme Structure**

It consists of 14 core courses and four electives. Each course (core and elective) is 2units. There are 2 compulsory cross-cutting courses on offer (computer and communication skills), each with a 1-unit weight. A student is required to complete 36 units to qualify for a BA in Natural Resources Management degree. This shall be made of all core courses at each level, whereby a student shall be required to accomplish a minimum of 12 units at each level. For example, in level 1 a student will be required to undertake all 12 units from the core courses plus 2 units from the compulsory courses as indicated in this Handbook. In level 2, students shall be required to accomplish all 5 core courses, which make up 10 units and select a minimum of one course from the elective COURSES. In level 3, students shall be required to do all 6 core courses, which make 12 units

### **Level 1 (All Courses)**

<b>Course Codes</b>	<b>Course Title</b>
ORM 101	Background to Natural Resources
ORM 102	Introduction to Population, Resources and Environment
ORM 103	Introduction to Geographic Techniques

ORM 104	Climatology
ORM 105	Introduction to Human Geography
ORM 106	Gender and Natural Resource Management
OFC 017	Communication Skills*
OCP 100	Introduction to Computer*
	<b>Total</b>

\* 2 compulsory courses @ 1 unit = 2 units included

### Level 2 (Five Core and One Elective)

Course Codes	Course Title
ORM 201	Minerals and Energy Resources
ORM 202	Remote Sensing and Geographic Information Systems
ORM 203	Social Research Methods in Geography
ORM 204	Field Practical
ORM 205	Environmental hazards and natural disaster management*
ORM 206	Population and Poverty Studies*
ORM 207	Urban Planning and Management*
ORM 208	Principle of Ecology

### Elective courses

### Level 3 (All courses)

Course Codes	Course Title
ORM 301	Environmental Economics
ORM 302	Policy Issues in Natural Resources
ORM 303	Environmental Impact Assessment
ORM 304	Climate Variability and Environmental Resources Management
ORM 305	Biodiversity Monitoring Conservation and Management
ORM 306	Land Evaluation and Land Use Planning
	<b>Total</b>

### Bachelor of Arts in Population and Development (BAPD)

The Bachelor of Arts in Population and Development aims at equipping graduate students with demographic, Social, economic and geographic analytical tools and their applications in resources in planning and use for sustainable development. At the end of the programme, learners will be expected to have acquired competences in determining the relationship between population and other broad parameters, such as internal and international immigration, poverty, environment and global warning, which are essential for development planning. The programme is designed to produce competent professionals in demography, population and development planning.

### Programme Structure

BA (PD) consists of 16 core courses and 4 electives. Each course (core and elective) has a 2 units' weight. In addition, there are 2 compulsory cross-cutting courses on offer (computer and communication skills), each with a 1-unit weight.

This shall be made of all core courses at each level, whereby at each level, a student shall be required to accomplish a minimum of 12 units. For example, in level 1 and level 2, students will be required to undertake all courses as indicated in this Handbook. In level 3, students shall be required to accomplish all the 7 core courses, which make 14 units and select a minimum of 2 elective courses.

### Programme Organization

### Level 1 (All Courses)

Course Codes	Course Title
OPD 101	Introduction to Population Studies
OPD 102	Introduction to Family Life Education

OPD 103	Introduction to Reproductive Health and Sexual Health
OPD 104	Medical Geography
OCP 100	Introduction to Computer
OFC 017	Communication Skills
	One elective course
	<b>Total</b>

### Level 2 (All Courses)

Course Code	Course Title
OPD 201	Dynamics of Population Structure
OPD 202	Gender and Development
OPD 203	Basic Demographic Methods
OEC 124	Social Science Research Method
OPD 209	Field Practical
	<b>Total</b>

### Level 3 (Seven Core Courses and at Least One Elective)

Course Code	Course Title
OPD 301	Gender, Health and Family Planning
OPD 302	GIS and Population Studies
OPD 303	Population, Policy and Development
OPD 304	Population, Migration and Development
OPD 305	Family Resources Management
OPD 306	Urban Systems, Planning and Management*
OPD 307	Population, Environment and Development
OPD 308	Nutrition for Health*
OPD 309	African Environment and Development*
OPD 310	Rural Settlement and Development
ODS 101A	Concepts and Theories of Social Development*
	<b>Total</b>

### Elective courses

#### OGE 229: Geography Field Practical's

There are two Geography Field Practical's (GFP I and GFP II) to be done by all second and third-year students taking Geography. The 2 GFPs will carry 2 units. The aim of conducting Field Practical's is to enable student to match and concretize theory and application of geographical knowledge in the Field. Geography Field Practical's are deliberately decentralized into geographical zones. It is intended to bring the Practical's closer to students in their own physical environments so as to know more about it as a potential for community development; and to minimize GFP running costs.

All second-year Geography students have to undertake a 14-day supervised Geography Field Practical in their respective Geographical Zones/ regions. GFPI & GFPII will be conducted successively within the 14 days provided. Thereafter, students have to write a Group Work Report for GFPI and a comprehensive report for GFPII to be submitted three months after completion of GFPI. Students have to incur subsistence, travel, and stationery costs during Geography Fieldwork apart from paying Tsh 200,000 to the OUT. This amount of money can be solicited by the student from different sources, including applying to the university's Student Loan Board. No student will be allowed to carry out GFPII before completion of GFPI first. The Final Grade is the average between scores obtained after marking GFP I and GFP II out of 100%

#### Bachelor of Arts in Tourism Management (BTM)

The Bachelor of Arts in Tourism Management (BTM) is a revised programme of the old BA Tourism studies. It prepares competent graduates for a career in the tourism and travel industries. It has been designed to give students a solid foundation in both disciplines in order to prepare them for leadership in the tourism sector. Increasingly, employers prefer university graduates with analytical as well as practical skills for management positions. This programme is aimed at producing informed and

knowledgeable graduates with a critical awareness of tourism as one of the most powerful forces in the globalized world of today. They should be in a position to demonstrate a theoretically based and practically sound level of competence for employment as tourism officers, tourism marketers, analysts, tourism planners, travel agents, managers, researchers, educators, policymakers, and tourism entrepreneurs.

### Programme Organization

The following are subjects offered for the Bachelor of Arts in Tourism Management (BTM):

#### Level I

Course Codes	Course Title	Status of the course
OTM 101	Introduction to Tourism	Core
OTM 102	Introduction to Wildlife Ecology	Core
OTM 103	Integrated Hospitality Operations	Core
OTM 104	Special Interest Tourism	Elective
OTM 105	Leisure and Recreation Tourism	Core
OTM 106	Customer Care concepts and practices in Tourism	New this academic year (2022/2023. For old students, it is OME 313)
OFC 017	Communication Skills	Core
FRA 1	French for Beginners	Elective
OJO 228	Public Relations	Elective
ORM 101	Background to Natural Resources	Elective

#### Level II

Course Codes	Course Title	
OTM 201	Cultural and Heritage Tourism	Core
OTM 202	Tourism Economics	Core
OTM 203	Tourism Policy & Planning	Core
OTM 204	Tourism Marketing and Promotion	Core
OTM 205	Sustainable Tourism Development	Core
OCP 100	Introduction to Computer	Core
OEC 134	Social Sciences Research Methods	Core
FRA 2	Intermediate French	Elective
OLS 203	Collection Developments and Management	

#### Level III

Course Codes	Course Title	
OTM 301	Event and Festival Planning Development	Core
OTM 302	Travel and Tour Operations Management	Core
OTM 303	Tourism Entrepreneurship	Core
OTM 305A	Tourism field Study (May each year)	Core
OTM 305 B	Tourism Internship -4weeks (April-August each year)	Core
OTM 305 C	Special Project (Dissertation)	Core

#### 1. OTM 305 A- Tourism Field Study

The tourism field study will be done by all second-year students (after completion of 200 series courses). This is a compulsory field study for all BTM students. The University will cover organization costs and any other charges as stipulated in the cost-sharing policy of the University. Students must pay course fees as per university regulations and cover their travel expenses (the cost of living and other costs as will be communicated by the department. This is usually a one-week education trip to tourism and hospitality establishments; there is no alternative to this. OTM 305 A is a compulsory course, so all students who fail to attend will not attain BATM. It is usually conducted in May or June. Registration for the field trip is usually in January. Those who register for a trip and fail to attend will have to pay again when the next is offer.

## 2. OTM 305 B- Tourism Internship

Tourism students are advised to attach themselves to one of the tourist service providers such as national parks, hotels, travel and tour companies, museums, etc. It is not allowed to intern in your working office. Registration for the internship is always in January. The internship is for FOUR weeks. Students are advised to do their internship between April and August Each Year.

## 3. OTM 305 C-Tourism Research Project (Dissertation)

Students are advised to propose a title of interest and email it to the Tourism Department. Thereafter, the department will review the title and give you feedback as either accepted/ accepted with few amendments/rejected and required to re-send. This is done in January each year. The end of submitting a complete research project is AUGUST each year.

## Department of Political Science, Public Administration, History and Philosophy

This department has three undergraduate programmes, namely Bachelor of Arts in History, Bachelor of Arts in Public Administration (BAPA) and Bachelor of Arts in International Relations (BAIR).

### Bachelor of Arts in History (BA HIST)

All BA History students must take all CORE courses.

#### Level 1

Code	Titles
OHI 131	Introduction to African History
OHI 132	History of Tanzania
OHI 133	Theory and Practice in Africa History
OHI 134	The Political History of Zanzibar
OHI 135	Themes in African Prehistory
OHI 136	Development of Political Philosophy
OPR 121	Introduction to Critical Thinking and Argumentation
OFC 017:	Communication Skills
OCP 100:	Introduction to Computer

#### Level 2

Course Codes	Course Title
OHI 231	History of East Africa
OHI 232	History West Africa
OHI 233	Europe since the 19 <sup>th</sup> Century
OHI 234*:	Globalization and African History
OHI 235	History of South Africa to Recent Past
OHI 236	History of USA
OHI 237	Development of Political Philosophy
OPR 222	History and Development of African Philosophy

*\*Not on offer in this academic year.*

#### Level 3

Course Codes	Course Title
OHI 331	Africa and the Black Diaspora
OHI 332	History of Central Africa
OHI 333	History of North Africa
OHI 335*:	The History of Africa and World Religions
OHI 336*:	Dissertation

*\*Not on offer in this academic year.*



## Bachelor of Arts in Public Administration (BAPA)

### Rationale

The programme has been introduced to cater to the required competencies and skills to manage both government and private affairs at government and personal levels. The cadre that will go through the programme is expected to occupy various positions of administrative nature as supervisory and middle-level managers, either as administrators, personnel officers, human resources officers and several others. This cadre is needed to strengthen the government's capacity at local and central levels to deliver services to its clients for effective and efficient operations of those offices. The fact that the government structure and systems are undergoing remarkable changes requires employees who have been well nurtured and groomed to acquire those attributes of dynamism, innovativeness, creativity and commitment towards the services in their country and in the region as a whole. The fact that Public Administration, which forms part of Political Science, has not been well streamlined in the Political Science and Public Administration stream, not only in our university but also in other old universities where public administration is taught as part of the political science programme. As such, under this programme Public Administration as a discipline and a profession will be more focused and thus enable the trainees to come out well-versed with the methods and approaches in the management of governmental affairs

### The specific objectives of this programme are to:

- i. Train students to acquire professional qualifications so that they can serve in different administrative and managerial positions in public and private sector organizations
- ii. Produce graduates who can fit well in the career of public administrators and are able to make a contribution to the dynamics of administration of public and private organizations.
- iii. Equip students with knowledge and skills to enable them to address the complex problems and pressures that surround public organizations and explore viable solutions within those organizations
- iv. Equip students with the requisite qualifications for enrolling in Masters's programme in this University and others within the country and outside the country
- v. Equip students with competences and skills that will make them compete well in the labour market, within the country and in the region as a whole.

### Assessment Strategy

All courses are examined during the academic year in which they are studied. The examinations consist of written Tests, demonstrations, Practical projects and written Annual examinations at the end of each part based on percentage guides. Tests account for 30%, while the written Final examination accounts for 70% of total marks. The pass mark for both continuous assessment and annual examination is 40%. A candidate who fails to attain the pass mark is allowed to write a supplementary examination. A candidate who fails a supplementary examination will be required to repeat the course. Repeating a course means doing the Test and Annual examination.

### Programme structure

It should be born in mind that the Bachelor of Arts in Public Administration is being introduced to the university for the first time. It covers some theoretical and practical knowledge that will enable students to become better performers in public service. The programme is detailed here under:

Course Codes	Course Title
<b>Level 1</b>	
OFC 017	Communication and Study Skills
OCP 100	Introduction to Microcomputer studies and information Technology
OPS 122	Government and Politics in Africa
OEC 134	Social Science Research Methods
OPA 101	Introduction to Public Administration
OPA 102	Organization Theory and Public Bureaucracies
OPA 103	Local Government Administration in Tanzania
OIR 101	Introduction to the Study of Politics
OIR 102	Political Thought
<b>Level 2</b>	
OPA 201	Administrative Law

OPA 202	Decision-Making and Public Policy Analysis
OPA 203	Management of Human Resources
OPA 204	Organization Behavior
OIA 200	Field Work/Industrial Attachment
OIR 201	Theories and Issues in International Relations
<b>Level 3</b>	
OPA 301	Budgeting and Financial Control in the Public Sector
OPA 302	Leadership and Governance
OPA 303	Industrial Relations
OPA 304	Strategic Management
OPA 305	Comparative Public Administration
OPS 320	Democracy and Human Rights
OIR 302	Contemporary Issues in Global Politics

### **Field Practice:**

The students have to undertake a compulsory field attachment for six to eight weeks, during which students shall be exposed to the real world of work. During this period student shall be able to merge theory with practice.

### **Bachelor of Arts in International Relations (BAIR)**

#### **Rationale**

A complex pattern of interactions and cross-border transactions in the contemporary international system point to a need to develop training curricula that will cater to the current and future needs of University students to build their capacities to cope with and address the challenges associated with broadly extended international issues. For example, the dramatic change in the modus operandi of the transnational corporations brings about a problem of maneuvering the harmonized rules and principles of equity shares of the gains and losses between partner-states. The Bachelor of Arts in International Relations degree programme is designed to equip students with modern skills and competencies and to prepare them to become responsible international citizens who can act firmly and aggressively in the international arena. The programme is designed to produce qualified and practically competent practitioners in the area of International Relations and Diplomacy who can match theory and practice and demonstrate an impact in the management of foreign affairs. The Bachelor of Arts in International Relations programme is designed to provide students with a combination of theoretical and practical knowledge and with the ability to apply the same in various capacities and levels. Graduates from the programme are expected to have:

- ✓ Analytical capacity on international affairs
- ✓ A high level of communication skills
- ✓ The ability to identify and analyze problems and opportunities and collect pertinent data
- ✓ A sensitivity to controversies of cross-border nature
- ✓ An ability to act as a change agents and manipulator of various foreign affairs

These characteristics will enable graduates of the programme to accomplish their goals by working with and through people in both national and international political settings.

#### **Student Profile**

The programme targets local and international individuals who meet the OUT's minimum admission criteria, irrespective of age, gender, race, physical abilities and other individual situations. Offered through the Open and Distance Learning mode, student enrolment in the programme is unlimited.

#### **Programme Structure**

The programme is designed and implemented in 3 sequential levels: 100 Level (Level One), which is an introductory to key concepts and theories; 200 Level (Level Two), which imparts detailed knowledge, and understanding and develops appropriate intellectual skills; and 300 Level (Level Three) which further enhances professional, practical and transferable key skills through research, field visits and internship and synthesis. The three levels can be completed in three years, but average learners can cover the same in not more than six years.

Course Codes	Course Title
<b>Level</b>	
OCP100	Introduction to Computer
OFC 017	Communication Skills
OIR 101	Introduction to the Study of Politics
OIR 102	Political Thought
OEC 134	Social Science Research Methods
OIR 103	Africa in the Global Context
OIR 104	International Organizations
OPS 122	Government and Politics in Africa
OPA 101	Introduction to Public Administration
<b>Level 2</b>	
OIR 201	Theories and Issues in International Relations
OIR 202	International Political Economy
OIR 203	Public International Law
OIA 200	Field Work/Industrial Attachment
OPA 202	Decision Making and Public Policy Analysis
FRA1 or FRA 2	French for Beginners OR Intermediate French
<b>Level 3</b>	
OIR 301	Global Governance
OIR 302	Contemporary Issues in Global Politics
OIR 303	Regional Integration
OIR 304	The Political Economy of Conflict Resolution
OPS 320	Democracy and Human Rights
OPA 302	Leadership and Governance

## Department of Sociology and Social Work

### Introduction to the Department of Sociology and Social work

Until 2011/2012 The Department offered two sister programmes: Bachelor of Arts in Sociology and Bachelor of Arts in Social Work is considered a two-in-one degree programme, whereby students graduated either as social workers or as sociologists. The degree programmes were designed in such a way that, in the first two years, all students took the same subjects. From the third year, students select either to opt for social work studies or for Sociology studies, hence the difference in the output. From the academic year 2012/2013, following a review of the social work component of the two-in-one degree, a Bachelor of social work became a standalone degree. The Bachelor of Arts in Social Work Degree (BASW) had been phased out.

### Bachelor of Arts in Sociology (BASO)

The Department of Sociology and Social Work has recently reviewed the Bachelor of Sociology programme, which is expected to be submitted to TCU for accreditation soon. A stand-alone Bachelor of Arts in Sociology degree was approved by TCU and started to be offered in 2015/16. The programme has been designed to focus on specializations, including Medical, Social Welfare Administration and Rural Sociology, to suit the current social demand. This motivated the need to establish a Master of Sociology which is highly in demand by the stakeholders.

### Level I

Course Code	Course Title
OSS 121	Introduction to Sociology
OSS 122	Introduction to Social Science Research Methods
OSS 123	Classical Sociological Theory
OSS 124	Introduction to social Psychology
OSS 125	Critical thinking and argumentation
OCP 100	Introduction to computer
OFC 017	Communication skills

**NOTE:** After successful completion of all core courses in level I and above, a student will be allowed to choose a specialization from options A, B or C. However, while doing a

specialization course of one's choice, in levels II and III, students **MUST** also do compulsory courses in levels II and level III, respectively. See the table below for a guide to units for BASO students.

#### Level II

Course Code	Course Title
OSS 221	Contemporary Sociological Theory
OSS 222	Social Science Research Methods
OSS 223 a	Field Practice I

#### Level III

Course Code	Course Title
OSS 321	Sociology of Knowledge
OSS 322	Poverty, Wealth, and Inequality
OSS 323	Globalization and Social Problems
OSS 223 b	Field Practice II

**Note:** The three specialization courses A, B and C from which to choose from are as follows.

#### (A) Medical Sociology Specialization Courses

##### Level II

Course Code	Course Title
OSS 224	Cultural Anthropology
OSS 225	Medical Sociology
OSS 226	Population and Development

##### Level III

Course Code	Course Title
OSS 325	Health systems in Tanzania
OSS 326	Reproductive health
OSS 327	Stratification, Class and Health

#### (B) Social Welfare and Administration Specialization Courses

##### Level II

Course Code	Course Title
OSS 227	Introduction to Social Policies
OSS 228	Community Development
OSS 229	Social Welfare services
<b>TOTAL</b>	

##### Level III

Course Code	Course Title
OSS 327	Social policy analysis
OSS 328	Gender and development
OSS 329	Social planning and Evaluation

#### (C) Rural Sociology Specialization Courses

##### Level II

Course Code	Course Title
OSS 231	Introduction to rural sociology
OSS 232	Sociology and rural development
OSS 233	Peasant economy

##### Level III

Course Code	Course Title
OSS 331	Rural cooperatives
OSS 332	Agrarian social structure and social change
OSS 333	Rural-Urban contrast

### Guide to units for BASO students (New Programme)

Level	OPTION A	OPTION B	OPTION C
I	ALL (12)	ALL (12)	ALL (12)
II	Level II (5) + Option A II (6)	Level II (5) + Option B II (6)	Level II (5) + Option C II (6)
III	Level III (7) + Option A III (6)	Level III (7) + Option B III (6)	Level III (7) + Option C III (6)
<b>TOTAL</b>	<b>36</b>	<b>36</b>	<b>36</b>

### Bachelor of Social Work (BSW)

The Bachelor of Social Work (BSW) is a new social work professional degree. This degree began in the academic year 2012/2013. This option is only for Bachelor of Social Work entrants from the 2012/2013 academic year. Students taking the social work option from the previous social work option will have to complete their courses according to the option above.

#### Level One

Course Code	Course Title
OFC 017	Communication Skills
OCP 100	Introduction to Computer
OSS 102	Introduction to Sociology and Anthropology
OSP 101	Introduction to Social Work
OSP 102	Social Work Professional Ethics
OSP 103	Social Work Research Methods I
OSP 104	Introduction to Psychology for Social Workers

#### Level Two

Course Code	Course Title
OSP 201	Human Behavior and the Social Environment
OSP 202	Empowering Marginalized Populations
OSP 203	Introduction to Social Welfare Policies
OSP 204	Social Work Practice with Individuals and Families
OSP 205	Social Work Practice with Groups
OSP 206	Social Work Practice with Organizations
OSP 207	Social Work Practice with Communities
OSP 208	Introduction to Field Practice
OSP 304	Field Practice I (Block)
<b>Total</b>	

#### Level Three

Course Code	Course Title
OSP 301	Social Welfare Policy Analysis and Evaluation
OSP 302	Social Work Research Methods II
OSP 303	Social Work Research Project
OSP 304	Field Practice II (Block)
<b>Total</b>	

### Non-Degree Programme (Certificate and Diploma in Social Work)

As Tanzania undergoes social changes and growth both demographically and economically, it experiences increasing challenges of resources, marital conflicts, Gender Based Violence (GBV),

Violence Against Children (VAC), HIV and AIDS, Child Marriage, Child labour and many others, hence the need for social work intervention. Based on the same argument, developing Social Work Competence-Based Training Curriculum was required to equip graduates from Social Work institutions with the necessary knowledge and skills to address the challenges competently.

#### NTA Level 4: Semester I

Code	Module Title	Scheme Of Study Hrs/Wk				
		L	T	P	AS	Credit
SWT04101	Basics of Social Work	3	2	2	2	14
SWT04102	Social Work Values and Ethics	2	1	-	1	06
SWT04103	Information Communication Technology in Social Work	2	1	2	2	10
SWT04106	Fundamentals of Sociology	2	1	-	1	06
SWT04109	Psychology for Social Workers	2	1	2	2	10
SWT04110	Social Welfare Services	2	2	2	2	12
	<b>Sub -Total hours/Week</b>	<b>13</b>	<b>8</b>	<b>8</b>	<b>10</b>	<b>58</b>
	<b>Total hours/Week</b>	<b>39</b>				

#### NTA Level 4: Semester II

Code	Module Title	Scheme Of Study Hrs/Wk				
		L	T	P	AS	Credit
SWT04204	Social Work Practice in Health Care	2	2	3	2	13
SWT04205	Social Psychology for Social Workers	2	2	1	2	11
SWT04207	Human Rights and Gender in Social work Practice	2	1	-	1	06
SWT04208	Fundamentals of Social Empowerment	2	1	1	1	07
SWT04211	Basics of Social Work Field Instructions	2	1	-	1	05
SWT04212	Block field Work	-	-	-	-	25
	<b>Sub -Total hours/Week</b>	<b>10</b>	<b>7</b>	<b>5</b>	<b>7</b>	<b>67</b>
	<b>Total hours/Week</b>	<b>*29</b>				

Code	Module Title	Scheme of Study Hours/Week				
		L	T	P	AS	Credit
SWT 05101	Communication Skills	2	1	2	2	10
SWT 05102	Guidance and Counseling	3	1	3	2	14
SWT 05103	Social Welfare Policy and Services	3	1	2	1	11
SWT 05104	Social Work Practice	2	1	1	1	8
SWT 05105	Basic Statistics for Social Workers	2	-	2	1	8
SWT 05106	Social Work Case Management	3	1	2	1	10
	<b>Sub-Total hours/Week</b>	<b>15</b>	<b>5</b>	<b>12</b>	<b>8</b>	<b>61</b>
	<b>Total Hours/week</b>	<b>40</b>				

#### NTA Level 5: Semester 1

Semester II		
Code	Module Title	Scheme Of Study Hrs/Wk

		L	T	P	AS	Credit
SWT05207	Entrepreneurship skills	2	1	1	1	08
SWT05208	Social Advocacy and Empowerment	3	-	2	2	10
SWT05209	Social work and Law	3	1	2	1	11
SWT05210	Social Work Field Instruction	2	-	-	1	5
SWT05211	Block Field Work Practice	-	-	-	-	25
<b>Sub-Total hours/Week</b>		<b>10</b>	<b>2</b>	<b>5</b>	<b>5</b>	<b>59</b>
<b>Total Hrs/week</b>		<b>22*</b>				

**Key**

L - Lecture hours

T - Tutorials hours

P – Practical/Project hours

AS – Assignment hours

\* The rest of the hours per week in a semester will be allocated for Block Field practice

**NTA Level Six: Semester 1**

Code	Module Title	Scheme Of Study Hrs/Wk.				
		L	T	P	AS	Credit
SWT06101	Social Policy	2	1	1	1	7
SWT06103	Resource Mobilization for Social Welfare Services	2	1	2	2	10
SWT06104	Rehabilitation Services in Social Work Practice	2	-	1	1	7
SWT06107	Administration of Social Welfare Resources	4	1	1	2	12
SWT06108	Social Work Best Practices	2	2	2	2	12
SWT06109	Basic Leadership and Administration Skills	2	1	1	1	8
<b>Sub-Total hours/Week</b>		<b>14</b>	<b>6</b>	<b>8</b>	<b>9</b>	<b>56</b>
<b>Total hours per week</b>		<b>37</b>				

**Key**

L - Lecture hours

T - Tutorials hours

P - Practical hours

AS – Assignment hours

Semester II						
Code	Module Title	Scheme Of Study Hrs/Wk.				
		L	T	P	AS	Credit
SWT06202	Applied Social Welfare Laws	2	1	1	1	7
SWT06205	Social Work Research Methods	2	1	1	2	10
SWT06206	Crisis Intervention and Conflict Management	2	1	1	1	10
SWT06210	Social work interventions in HIV and AIDS	1		1	1	4
SWT06211	Quality Assurance and Improvement in Social Welfare Services	1	-	1	1	5
SWT06212	Block Field Practice	-	-	-	-	30
<b>Sub-Total hours/Week</b>		<b>8</b>	<b>3</b>	<b>5</b>	<b>6</b>	<b>65</b>
<b>Total hours/week</b>		<b>*22</b>				

\* The rest of the hours per week in a semester will be allocated for Block Field practice

## Department of Media and Library Studies

### Introduction

The Department of Journalism and Media Studies offers three-degree programs, which are BA Journalism and BA Mass Communication and Bachelor of Library Information Management, whereby students graduate as Journalists or as public relations officers/corporate secretaries and library professionals. The degree programmes are designed in such a manner that during the first year of the studies, all students i.e., those taking B.A Journalism and those pursuing BA Mass Communication will undertake the same subjects. During the second and third year, however, the students taking Journalism will undertake a different programme from that of Mass Communication hence the difference in their output. The department also runs MA (Mass Communication) for postgraduate students

### Entry qualifications

Candidates for Journalism and Media Studies will only be admitted based on The Open University of Tanzania's rules and regulations which govern the admission process.

### Subject combination

There are 21 core subjects for BA Journalism and 23 core subjects for BA Mass Communication. Four of the core subjects which students of both programmes are required to undertake at Level I are offered by other Departments. These courses include OFC 017 Communication Skills, OCP 100 Introduction to Microcomputer Studies and Information Technology, OCP 121 Critical Thinking and Argumentation, and ODS 101A Concepts and Theories of Social Development. The core subjects for the BA Journalism programme form a total number of 34units while the BA Mass Communication programme forms 36 units. BA Journalism students shall be required to take at least five elective courses while BA Mass Communication students shall take at least three elective courses to cover 39 units in order to graduate. Two elective courses are offered at Level I for both programmes, three elective courses at Level II whereby two for BA Journalism and only one for BA Mass Communication, and at Level III, only one elective course is offered for both programmes.

### Assessment procedure

Course work for BA Journalism and BA Mass Communication accounts for 30% for the Main Timed Tests. The Annual Examination accounts for 70%, thus making a total of 100% score.

### Student Field Work and Practicum

All students will be required to undertake field study at Levels II and III. Also, students shall be required to conduct practicum at all Levels. Field work and practicum carries two units at each level.

### Bachelor of Arts in Journalism (BA Journalism)

#### Level One

Course Code	Course Name
OJO 121	Introduction to Journalism and Mass Communication
OJO 122	News Reporting – I
OJO 123	Introduction to Media Law and Ethics
OJO 124	Practicum
OJO 125	English for the Media
OJO 126	Kiswahili kwa Wanahabari
OCP 100	Introduction to Computer
OFC 017	Communication Skills
OPR 121	Critical Thinking and Argumentation
ODS 101 A	Concepts and Theories of Social Development

#### Level Two



Course Code	Course Name
OJO 220	Practicum
OJO 221	News Reporting – II
OJO 222	Features and Opinion Writing
OJO 223	Photojournalism
OJO 224	Media Law and Ethics
OJO 225	Editing, Layout and Graphics
OJO 226	Media Research
OJO 227	Broadcasting: Radio, Television
OJO 228N*	Specialized Reporting: HIV & AIDS, Environment.
<b>Total Units for This Level</b>	

### Level Three

Course Code	Course Name
OJO 320	Practicum
OJO 321N*	Specialized Reporting: Edutainment, Court Reporting, Political Reporting and Business Reporting
OJO 322	New Media Technologies
OJO 323	Media Management
OJO 324	Investigative Journalism
OJO 325	Dissertation
<b>Total Units for this Level</b>	

\*N=new course

**Note:** From the academic year (2013/2014), course codes for the BA Mass communication Programme have changed from “OJO” to “OMC” for all series, as indicated in the table below, to reflect the name of the programme.

## Bachelor of Arts in Mass Communication (BA Mass Comm)

### Level One

Course Code	Course Name
OMC 121	Introduction to Journalism and Mass Communication
OMC 122	News Reporting – I
OMC 123	Introduction to Media Law and Ethics
OMC 124	Practicum
OMC 125	English for the Media
OMC 126	Kiswahili kwa Wanahabari
OCP 100	Introduction to Computer
OFC 017	Communication Skills
OPR 121	Critical Thinking and Argumentation
ODS 101 A	Concepts and Theories of Social Development

### Level Two

Course Code	Course Name
OMC 220	Practicum
OMC 221	News Reporting – II
OMC 222	International Issues in Mass Communication
OMC 223	Advertising I
OMC 224	Media Law and Ethics
OMC 225	Editing, Layout and Graphics
OMC 226	Media Research
OMC 227	Broadcasting: Television and Radio
OMC 228	Specialized Reporting: HIV & AIDS, Environment or Local Government.
OMC 229	Public Relations I

### Level Three

Course Code	Course Name
OMC 320	Practicum
OMC 321	Specialized Reporting: Edutainment, Court Reporting Political Reporting and Business Reporting
OMC 322	New Media Technologies
OMC 323	Media Management
OMC 324	Public Relations II
OMC 325	Dissertation
OMC 326	Advertisement II

#### Old Codes Equivalent to New Codes for BA Journalism

Old Code	New Code
OJO 230	OJO 220
OJO 231	OJO 228N
OJO 321	OJO 324N
OJO 326	OJO 325N
OJO 328	OJO 321N
OJO 327	OJO 320

#### Old Codes Equivalent to New Codes for BA Mass Communication

Old Code	New Code	Course Name
OJO 121	OMC 121	Introduction to Journalism and Mass Communication
OJO 122	OMC 122	News Reporting – I
OJO 123	OMC 123	Introduction to Media Law and Ethics
OJO 124	OMC 124	Practicum
OJO 125	OMC 125	English for the Media
OJO 126	OMC 126	Kiswahili kwa Wanahabari
OJO 230	OMC 220	Practicum
OJO 221	OMC 221	News Reporting – II
OJO 232	OMC 222	International Issues in Mass Communication
OJO 229	OMC 223	Advertising I
OJO 224	OMC 224	Media Law and Ethics
OJO 225	OMC 225	Editing, Layout and Graphics
OJO 226	OMC 226	Media Research
	OMC 227	Broadcasting: Television and Radio
OJO 231	OMC 228	Specialized Reporting: HIV & AIDS, Environment or Local Government
OJO 228	OMC 229	Public Relations I
OJO 327	OMC 320	Practicum
OJO 328	OMC 321	Specialized Reporting: Edutainment, Court Reporting Political Reporting and Business Reporting
OJO 322	OMC 322	New Media Technologies
OJO 323	OMC 323	Media Management
OJO 324	OMC 324	Public Relations – II
OJO 326	OMC 325	Dissertation
OJO 325	OMC 326	Advertisement – II

### Bachelor of Library and Information Management (BLIM)

#### Programme Overview

A Bachelor of Library and Information Management has been developed in response to the demand for a large number of trained personnel in libraries, documentation and information centers. Another reason is due to repeated requests by practitioners in the Library Science profession who need further training opportunities through a distance-learning mode of delivery that is both flexible and affordable. The Bachelor of Library and Information Management Programme is offered through distance learning mode. The main medium of instruction will be print materials and ICT-supported e-materials. To qualify for the award of a degree, a candidate must clear all three levels of the degree course. The

maximum duration of study is eight years, but the teaching and learning process is flexible enough to allow fast learners to complete the programme earlier. A fast-learning student may cover more units in a year; hence be able to complete the courses in less than the specified average period for obtaining a degree which currently is three years. The Bachelor of Library and Information Management Programme is designed to provide the student with a combination of theoretical and practical knowledge and with abilities to apply the same in various functional areas of library and information science. Graduates from the programme are expected to develop attitudes associated with progressive information services and to develop an understanding of the value, role and application of modern technology as it relates to library operations and the transfer of knowledge.

### Programme Structure

The programme requires a student to complete a minimum of 38 OUT units, including a Practicum to graduate. A student will have to study at least 12 units for each academic year. Core courses are compulsory for all students. Beyond the required core courses, students have the option of crafting a program of study specific to their interests and career goals in order to fill the gap so as to have 12 units as a minimum; there is no restriction in studying electives.

#### Level I

Course Codes	Course Title
OCP 100	Introduction to Microcomputer Studies and Information Technology
OFC 017	Communication Skills
OLM 101	Introduction to Library and Information Sciences
OLM 102	Information sources and references services
OLM 103	Information Society
OLM 104	Organization of Knowledge

#### Level II

Course Codes	Course Title
OLM 201	Information Technology and its Applications in LIS
OLM 202	Records Management and Archives Administration
OLM 203	Collection Developments and Management
OLM 204	Research Methods in Library and Information Sciences
OLM 205	Publishing and Book Trade Industry
OLM 206	Practicum

#### Level III

Course Codes	Course Title
OLM 301	Information and Knowledge Management
OLM 302	Management of Libraries and Information Centres
OLM 303	Legal Issues and Professional Ethics
OLM 304	Entrepreneurship and Information Marketing
OLM 305	Digital Libraries
OLM 306	Research Project

#### Electives

Students should select at least one optional course at level II and III

Course Codes	Course Title
OLM 207	Information systems design, analysis and Evaluation
OLM 208	Multimedia Studies
OLM 307	Sectoral Information systems and Services for users with special needs
OLM 308	Database Management and Information Retrieval

#### Notes:

- (i) The total credits for the programme is 380 (TCU credits), which is equivalent to 38 OUT Units
- (ii) OCP 100 and OFC 017 are compulsory university-wide courses.

OLM 206 Practicum: The practical training attachment exercise will require each student to work in a selected Library, Archive or Information Centre for a minimum period of 42days. The field attachment exercise shall be assessed and graded.

## Part Three

### Postgraduate Programmes

The faculty offers various postgraduate studies programmes, especially **master's degrees and postgraduate diplomas**. The Master's Degree and Postgraduate Diploma programmes to be offered by FASS during the 2022/23 academic year are as follows:

#### Master's Degree Programmes

- Master of Social work (MSW) – (*Hybrid mode*)
- Master of Arts in Gender Studies (*MA GS*) *Hybrid*
- Master of Science in Economics (MSc. Economics) – *Hybrid mode*
- Masters in Community Economic Development (MCED)- *Hybrid mode*
- Master of Arts in Monitoring and Evaluation (*MA M&E*)- *Hybrid mode*
- Master in Tourism Planning and Management (MTPM)- *Hybrid mode*
- Master of Arts in History (*MA Hist*)- *Hybrid mode*
- Master of Arts in Natural Resource Assessment and Management (*MANRAM*)- *Hybrid mode*
- Master of Arts in International Cooperation and Development (*MICD*)- *Hybrid mode*
- Master of Humanitarian Action, Cooperation and Development (*MHACD*) *Hybrid mode*
- Master of Arts in Governance and Leadership (*MAGL*)- *Hybrid mode*
- Master of Arts in Kiswahili (*MA Kisw*)- *Hybrid mode*
- Master of Arts in Linguistics (*MA Ling*)-Thesis
- Master of Arts in Geography (*M.A. Geogr*)-Thesis
- Master of Arts in Mass Communication (*MA MC*)- *Hybrid mode*
- Master in Library Information Management (*MLIM*)-*Hybrid*

#### Postgraduate Diploma Programmes

- Post Graduate Diploma in Social Work- (*PGDSW*)- *Hybrid*

#### Admission Requirements

Candidate holding the first degree or its equivalence in any field from recognized institutions is eligible for admission into FASS programme. Further admission criteria are as stipulated in the OUT prospectus ([www.out.ac.tz/prospectus](http://www.out.ac.tz/prospectus))

#### Delivery Modes for Master's Programmes by Coursework

We are progressively making use of a Virtual Learning Environment (VLE) called MOODLE (Modular Object-Oriented Dynamic Learning Environment). To access MOODLE platform, you will need to log into the relevant portal with your username and password. MOODLE can be used for the purpose of downloading the relevant learning resources and it can also be used as a platform for student-student or student-teacher interactions. From the new academic year starting Oct 2015, all FASS programmes will be offered through blended/hybrid executive mode, where students learn through an e-learning platform called MOODLE. Through this platform, students are registered into the system and a lecturer for each course uploads documents to be read in one week. In week 2 a lecturer posts a discussion question and appoints two students to propose a model answer. Other students do discuss online by posting their emails and commenting on the model answer.

#### Programme Structure and Assessment

So, to complete one course, there are six parts, equal to 12 weeks of learning for each course. There are three modules (trimesters) of about 12 weeks each required to complete the coursework. For example, if the programme has 6 taught courses in total, for each module, there could be two courses (i.e., two instructors). For each course in a trimester, there is a different assessment because they are taught by different lecturers. For each course, there is a take-home term paper (assignment) to be given to students in the second half of the respective trimester); and a final comprehensive examination at the end of the trimester. The online discussions weigh 20%, the term paper-30% and the final exam-50%. The lecturers do monitor the accuracy of contributions each student makes when discussing constituting the 20%. The examination is done by students at any regional center when

they are ready. Students must have participated in the discussions for all 6 parts of the course in the MOODLE platform for them to be allowed to do final examinations. The final exam is done after the second F2F session after consultations with students.

### Face-to-Face Sessions

There are two face-to-face sessions. The first one is done once only-this is for orienting students before the programme starts. The objective is to officially launch the programme and orient students on how to use MOODLE and how to register and modify their profiles in MOODLE platform. This takes about 2-4 days, normally on weekend in Dar es Salaam. If students cannot afford to come to Dar es Salaam, they are advised to visit any of the OUT regional centres where we have ICT technical staff who can register them into MOODLE system and orient them on how to use the MOODLE platform. In the first face-to-face, all lecturers are encouraged to be around, but most of the orientation is done by the programme coordinator and the Heads of the Department. The second Face-to-Face is done at the end of each trimester, where the lecturers involved in the trimester do meet with students normally in Dar es Salaam each for about 2 days hence 4 days for the two courses. The second Face-to-Face sessions are optional for students. Instructors do respond to difficult areas encountered while reading the documents and also during the discussions. It is also the time lecturer may insist on or clarify some academic issues that are of interest to students. The Face-to-Face sessions (first or second) can be conducted in any regional centre with at least 10 students. This implies that one does not necessarily have to leave the workstation to do this course (and other FASS courses) from Oct 2015.

### Duration of Programmes and Tuition Fees

The duration of the programmes is about 15 months (about 9 months' coursework and 6 months of dissertation). The fee is Tsh. 500,000 for each course, excluding the dissertation, i.e., the cost for one unit (10 credits) is equivalent to Tsh. 180,000, while most postgraduate courses weigh 2 units (20 credits).

The supervision cost for the dissertation is Tsh. 900,000. The minimum number of taught courses for most master's programmes is 6 (i.e. 2 courses per trimester excluding dissertation); hence the minimum tuition fee for such a programme with 6 taught courses would be Tsh. 3,900,000 [i.e. (500,000X6) + 900,000].

It should be noted that each examination is charged Tsh. 20,000 different from the tuition fee; hence a student should think of allocating Tsh. 120,000 for the 6 courses. This makes a comprehensive total fee to be Tsh. 4,020,000. The fee is paid in installments per trimester/module, and this is calculated according to the number of courses a student takes in one trimester/module. For example, if one takes two courses in a trimester/module, they will have to pay at least Tsh. 1,000,000.

### Master of Arts in Governance and Leadership (MAGL)

Master of Arts in Governance and Leadership Programme is designed for practitioners working or intending to work within community-based organizations, faith-based organizations, non-governmental organizations, international non-governmental organizations, international organizations, local governments and central governments.

### Programme Structure

Code	Course Title
OPS 601	Advanced Political Theory
OPS 602	Leadership, Governance and Development
OPS 603	Advanced Research Methodology
OPS 604	Leadership Ethics and Public Accountability
OPS 605	Political Parties, Democracy and Elections
OPS 606	Organization Behaviour
OPS 607	Advanced Public Policy Analysis
OPS 608	Strategic and Human Resource Management
OPS 609	Advanced Public Administrative Law
OPS 699	Masters Dissertation

### **Master of Arts in International Cooperation and Development (MICD)**

The Master's programme in International Cooperation and Development (MICD) is a three-trimester programme that benefits from the experience of a highly qualified team of lecturers who are specialized in various areas of international cooperation and Development such as Development Aid, International and Development Economics, Political Science, International Security and International Law. The programme is highly motivating for those who intend to work either in NGOs or enterprises with international activities or in the framework of multilateral institutions.

#### **Programme Structure**

<b>Code</b>	<b>Course Title</b>
OIR 601	International Cooperation and Development Policies
OIR 602	International Politics and Security
OPS 603	Advanced Research Methodology
OIR 604	African International Relations and Diplomacy
OIR 603	International Political Economy
OIR 605	Public International Law
OPS 601	Advanced Political Theory
OPS 699	Methodology and Master's Dissertation

### **Masters of Humanitarian Action, Cooperation and Development (MHACD)**

The Master of Humanitarian Action, Cooperation and Development (MHACD) programme offers a wide approach to issues concerning humanitarian actions well as to methodological research procedures. The programme benefits from the experience of a highly qualified team of lecturers who are specialized in various areas of Humanitarian and Development Aid, such as Management of NGOs, Design and Implementation of Projects on Humanitarian Action, international and Development Economics, Political Science, International Security, and International Humanitarian Law.

#### **Programme Structure**

<b>Code</b>	<b>Course title</b>
OHA 601	Crisis, Reconstruction and Development
OHA 602	Strategic Management of NGOs and Humanitarian Missions
OIR 601	International Cooperation and Development Policies
OHA 603	Public Health and Humanitarian Issues
OIR 602	International Politics and Security
OPS 602	Leadership, Governance and Development
OPS 603	Advanced Research Methodology
OIR 605	Public International Law
OIR 699	Masters Research Projects (Dissertation)

### **Master of Science in Economics (MSc Econ)**

The Master of Science in Economics (MSc. Econ) is a worthwhile graduate programme offered by The Open University of Tanzania through its Centre for Economics and Community Economic Development (CECED). The introduction of this programme was pressed by need for more trained economists at postgraduate level for sustainable national and international development.

#### **Programme Structure**

<b>Code</b>	<b>Course Title</b>
OEC 630	Advanced Microeconomics
OEC 631	Advanced Macroeconomics
OEC 632	Advanced Mathematics and Econometrics
OEC 633	Advanced Econometric
OEC 634	Macroeconomic Policy for Developing Countries
	<b>Electives (Choose one course)</b>
OEC 635	Economics of Money, Banking and Financial Markets

OEC 636	International Economics
OEC 637	Public Economics
OEC 638	Environmental Economics
OEC 699	Dissertation

### Master of Arts in Monitoring and Evaluation (MA M&E)

The Master of Arts in Monitoring and Evaluation (MA M&E) is an academic programme which seeks to develop sound and in-depth understanding on theoretical and practical aspects of monitoring and evaluation. It seeks to increase the pool of skilled human resources in the field of monitoring and evaluation in order to support government's initiatives in propelling socioeconomic development and wellbeing of Tanzanians. The programme adopts standard methods, techniques and best practices that are increasingly employed by international organizations such as the United Nations Development Programmes (UNDP) and the World Bank.

#### Programme Structure

Code	Compulsory Courses (core)
OEC 620	Fundamentals of Project Planning and Management
OEC 621	Principles and Practices of Monitoring and Evaluation
OEC 622	Research Methods and Statistics for Impact Evaluation
OEC 623	Planning for Monitoring and Evaluation System
OEC 624	Designing for Monitoring and Evaluation System
	<b>Electives (Choose one course)</b>
OEC 625	Cost Benefit Analysis: Theory and Application
OEC 626	Risk Management in Monitoring and Evaluation
OEC 627	Environmental Impact Assessment
OEC 699	Dissertation

### Master of Community Economic Development (MCED)

The Masters of Community Economic Development (MCED) is an exciting programme offered by The Open University of Tanzania through its Centre of Economics and Community Economic Development. (CEC)

#### Programme Structure

Compulsory Modules (Core)	
Course Code	Course Title
CED 631	Principles and practice of CED
CED 632	Advanced Research methods for Social Scientists
CED 633	Economics for CED
CED 634	Project design and management CED
CED635	Organizational management for community organizations
CED 636	Micro-Enterprise Development CED
CED 699	Dissertation

### Master of Arts in History (MA History)

MA programme in History is a two-year programme divided into Teaching, Book reviews and Term papers based on a selected list of- topics and a Final Examination. The programme gives the history graduate the advantage of having skills with many practical applications in the job market and adds upon what they have acquired during their undergraduate studies.

#### Programme Structure

Code	Course Name
OHI 601	Philosophy and Theory of History
OHI 602	Contemporary Issues in African Historiography
OH1 603	History Research Methodology
OHI 604	Colloquium on the Economic History of Tanzania
OHI 605	Graduate Seminar on Globalization



OHI 606	African Encounter with World Religions
OHI 607	Spirit, Mediums, Disease and Healing
OHI 608	African Indigenous Knowledge Systems
OHI 609	Peasantry and Labour Studies in Tanzania
OHI 612	Dissertation

### Master of Arts in Kiswahili

The MA Kiswahili programme has the three key objectives:

- (i) To train skilled professionals in Kiswahili Language, Linguistics and Literature
- (ii) Produce scholars who can comprehend the significance of Kiswahili Language and its contribution towards national and international development
- (iii) To equip students with stock of capabilities particularly in research and publication.

### Kiswahili Literature - Core Courses

Course Code	Course Title
OSW 601	Classical & Modern Poetry
OSW 602	Kiswahili Drama
OSW 603	Kiswahili Novel
OSW 604	Theories of Literary Criticism
OSW 605	A selected Author
OSW 606	Oral Literature
OSW 607	Movie Criticism

### Kiswahili Linguistics

Course Code	Course Title
OSW 608	Kiswahili Phonology
OSW 609	Kiswahili Morphology
OSW 610	Kiswahili Syntax
OSW 611	Kiswahili Semantics
<b>Elective Courses</b>	
OSW 612	History of Kiswahili Dialect
OSW 613	Sociolinguistics
OSW 614	Translation: Theory and Practice
OSW 615	Kiswahili Lexicography
<b>Compulsory Courses</b>	
OSW 616	Research Methodology
OSW 617	Dissertation Writing

### Master of Arts in Natural Resource Assessment and Management (MA NRAM)

MA (NRAM) is a broad continuum programme intended to quench thirst for knowledge to different clients regardless of age, sex and nationality. It is a timely programme aspiring to fill the knowledge and intellectual gap on sustainable natural resource management, which is a universal concern today, embracing both those with social sciences and natural sciences backgrounds. The main objective of the MA (NRAM) Programme is to equip professionals with innovative knowledge, skills and values in integrated natural resource assessment and management to enhance understanding of current natural resource management and environmental issues.

### Programme Structure

Course Code	Title
ORM 601	Contemporary Issues in Natural Resource Assessment and Management
ORM 602	Economics of Environmental and Natural Resources
ORM 603	Climate Change and Environmental Impact Assessment
ORM 604	Population Dynamics and Natural Resource Management
ORM 605	Applied GIS and Remote Sensing for Natural Resources Assessment
ORM 606	Research Methodology and Techniques in Natural Resource Assessment and Dissertation
<b>Electives (Choose One)</b>	

ORM 607	Land Degradation and Rural Livelihoods
ORM 608	Sustainable Energy Resources for Developing Countries
ORM 609	Biodiversity Conservation and Ecosystem Management
ORM 610	Ecology of Tropical Natural Resources
ORM 611	Changes in Urban Landscape and Future of Natural Resources

### **Master in Tourism Planning Management (MTPM)**

Master in Tourism Planning and Management (MTPM) programme is aimed at producing well-informed and highly knowledgeable graduates with a critical awareness of tourism as one of the most powerful forces in the globalizing World. Graduates should be in a position to demonstrate a theoretically based and practically sound level of competence for employment as tourism officers, tourism marketers, analysts, tourism planners, travel agents, managers, researchers, educators, policymakers, and tourism entrepreneurs.

#### **Programme Structure**

<b>Code</b>	<b>Course Title</b>
OTM 601	Theories and Practice of Tourism
OTM 602	Tourism Policy and Planning
OTM 603	Approaches to Hospitality Management
OTM 604	Tourism and Hospitality Entrepreneurship
OTM 605	Tourism Marketing and Promotion
OTM 606	Sustainable Tourism Development
OTM 698	Advanced Research Methods and Dissertation

### **Master of Social Work (MSW)**

Master of Social work is designed to enable students to enhance human wellbeing and help clients to meet their basic human needs. Further, the program aims at enabling students to empower clients who are vulnerable opposed and living in poverty. A student must accumulate a total 180 credits to graduate out of which 80 are for Practicum and dissertation. The remaining 100 are from taught courses i.e., 80 credits from 4 core courses and 20 credits from one elective course. The duration of this programme is about 18 months.

#### **Programme Structure**

<b>Course Code</b>	<b>Course Title</b>
OSP 602	Advanced Clinical Social Work
OSP 603	Advanced Administrative and Community Social Work
OSP 604	Advance Social Welfare Policy
OSP 605	Advanced Social Work Research Methodology
OSP 606	Postgraduate Field Practicum (600 hours)
OSP 607	Dissertation
<b>Elective Courses (Select one course for your specialization)</b>	
OSP 610	Leadership with Children and Families Services
OSP 611	Leadership in Health Services
OSP 612	Leadership in Development & Emergency Response
OSP 613	Leadership in Social Work Education

### **Master of Arts in Gender Studies (MA GS)**

Master of Arts in Gender Studies (MA GS) is structured in a way that it produces conversant scholars capable of addressing issues related to gender disparities and gender inequalities in society.

#### **Programme Structure**

<b>Course Code</b>	<b>Title (Compulsory)</b>
OGS 610	Feminist/Gender Theories,
OGS 611	Principles of Gender Construction, Deconstruction & Gender Mainstreaming
OGS 612	Gender and Community Economics
OGS 613	Gender Population & Development

OGS 614	Gender Research Methodology and Dissertation
<b>Elective Courses (select at least 2 courses)</b>	
OGS 615	Gender Technology and Education
OGS 616	Gender, Health and Social Issues
OGS 617	Gender Food and Environment
OGS 618	Gender, Language, Literature and Culture
Total Units	

### **Postgraduate Diploma in Social Work (PGDSW)**

Postgraduate Diploma in Social Work (PGDSW) has been motivated by the rapid increase of multifaceted problems due to local and international forces that affect most of the people, particularly the disadvantaged ones. The programme is suitable for students who basically do not have social work background at the bachelor's degree/advanced diploma levels that aspire for a Master of Social Work.

#### **Programme Structure**

<b>Code</b>	<b>Title</b>
OSP 501	Social Work Professional Ethics
OSP 503	Human Behavior and Social Environment
OSP 504	Social Work Practice with Individuals, Families and Groups
OSP 506	Social Work Practice with Communities and Organizations
OSP 508	Introduction to Field Practice
OSP 509	Social Welfare Policy Analysis and Evaluation
OSP 510	Field Practice (Block)

### **Master of Arts in Mass Communication (MA MC)**

The Department of Journalism and Media Studies in the Faculty of Arts and Social Sciences for the past 6 years has been offering BA in Mass Communication and BA Journalism degree programmes. Some of the graduates of the two programmes work in media houses, in public and private organizations as journalists, editors, communication/information officers or Public Relations Officers.

The Master of Arts in Mass Communication degree programme is designed to meet the needs of labour market and the educational needs of recent graduates and professionals. The program's curriculum emphasizes the integrated nature of the communication discipline. For example, the program offers education in Communication research, theories of mass communication, public opinion and media, theories of development and development communication, communication regulations and ethics, new media technology and communication planning. Therefore, the programme aims to provide the opportunity for career enhancement and/or further graduate studies.

#### **Programme Structure**

<b>Course Code</b>	<b>Course title</b>
OMC 600	Mass Communication Theories and Models
OMC 601	Mass Communication Regulations
OMC 602	Mass Communication Ethics
OMC 603	Public Opinion and Mass Media
OMC 604	Advanced Mass Communication Research Methodology
OMC 605	Master's Dissertation
OMC 606	Mass Communication Planning and Management
OMC 607	Strategic Corporate Communication

### **Master in Library & Information Management (MLIM)**

This programme is designed and developed to build professional skills across the information industry and creates opportunities for specializations in a variety of disciplines. It is intended for information practitioners who envision to work within information-based organizations, non-government organizations, international organizations, and central or local government departments. The programme is committed to carry out highly effective participatory approaches to managing and solving

information management problems in the communities. The programme is committed to carrying out highly effective participatory approaches to managing and solving library and information science problems affecting the industry.

The main objectives of this programme are:

- ✓ To train potential librarians/ information managers on the best and most participatory way to work in the information-based organizations
- ✓ To generate knowledge and professional skills in information management to enable leaders to make informed decisions
- ✓ To assist in building institutions that will ensure equitable sharing benefits of information
- ✓ To build capacity among information professionals working in public and private institutions

**Programme Mode of Delivery**

Masters in Library and Information Management is an 18–month, 18-unit (equivalent to 180 TCU Credits) programme. Master in Library and Information Management students will be required to undertake all core courses. The programme will be offered through blended mode where an e-learning platform (MOODLE) is mostly used, followed by a short face-to-face lecture session in three trimesters of taught coursework

In each trimester, two courses are taught and last for about 12 weeks.

Attendance to Face to Face is optional, but students are encouraged to attend and if not unable to, then students are encouraged to use Skype to follow class sessions. Participation in discussions through MOODLE platform is compulsory for students and no one is allowed to sit for the final exam without effectively participating in MOODLE discussions. After coursework, students are supposed to work on their dissertations. If a student has passed coursework but failed to do (or pass) a dissertation beyond the allowable registration duration is offered an ex-Postgraduate Diploma.

**Programme Structure**

Course Code	Course title
OLM 600	Fundamentals of Library and Information Management
OLM 601	Organization of Knowledge
OLM 602	Information and Communication Technology Applications
OLM 603	Records Management and Archival Administration
OLM 604	Management of Library and Information Centers
OLM 605	Research Methodology
OLM 606	Master’s Dissertation

**Doctor of Philosophy Degree (PhD)**

To obtain admission to the PhD degree programme in the Faculty of Arts and Social Sciences of The Open University of Tanzania, a candidate should hold a relevant master’s degree of the OUT of equivalent standing from another approved University.

**How does an aspirant register for a PhD? And for how long does it last?**

- ✓ The registration of PhD candidates shall follow a two-stage (stage I & II) process as prescribed for Masters-by-thesis candidates.
- ✓ Candidates for the PhD shall be required to register at the beginning of the first year of their studies and to renew their registration at the beginning of each subsequent year. Failure to renew a registration shall mean automatic discontinuation from the studies.
- ✓ A registered PhD candidate shall be assigned a supervisor(s) appointed by the Senate on the recommendation of the faculty. The supervisor(s) will be responsible for guiding the candidate in his/her research and shall, once every three months, submit reports on the candidate’s progress.
- ✓ The duration of the registration period shall not exceed **five years**. Failure by the candidate to complete the PhD degree programme within the prescribed period shall lead to her or his discontinuation from the study unless the Senate grants an extension. The maximum duration of the registration period shall not exceed **six years**



## **Part Four**

### **List of FASS Staff**

#### **Dean's Office**

##### ***Dean and Senior Lecturer***

Dr. Dunlop Ochieng: Dip (Ed); B.A (Culture) Hons; M.A (Linguistics) UDSM, PhD (Germany)

##### ***Coordinator, Postgraduate Studies (PGS)***

Dr. Fredrick Ladislaus Batinoluho: BSc in Horticulture (SUA); MSc in Protected Landscapes Management (Integrating Conservation and Development), Univ. of Wales, Aberystwyth, UK; MBA Corporate Management (Mzumbe University). PhD (OUT)

#### **Faculty Examination Officers**

Alexander Ndibalema Kaija: Certificate in Teaching Grade IIIA (Morogoro); Certificate in Fine Arts & Education (Butimba); BSW (Institute of Social Work); MSW (Open University of Tanzania)

Mr. Vincent Mpepo: BA (Mass Comm) UDSM; MA Mass Communication (OUT)

#### **Faculty Planners**

Mr. Manning Yusuph B.: Diploma in International Relations & Diplomacy, (Center for Foreign Relations) B.A. Public Relations & Marketing, Master of Arts in Mass Communication (SAUT)

#### **Faculty Quality Assurance Coordinator**

Ms. Celia Muyinga BA (Hons) Tourism Management, (Leads UK) MA Tourism Studies with Ecotourism, NAPIER, UNI, Scotland.

#### **Faculty Consultancy and Community Outreach**

Dr. Thereza Mugobi: BA Tourism and Management, University of Western Cape, Cape Town, SA: MA Economics and Communication (International Tourism), University of Lugano, Switzerland, PhD (OUT)

#### **Administrative Staff**

##### ***Senior Human Resources Management Officer and Faculty Administrator***

Ms. Nuru Abdallah: MHRM (OUT); MBA & BSC. (SUA)

#### **OMASEC II**

Ms. Zitha Kessy: Diploma in Secretarial Studies (SSC), Diploma in Administration & Secretarial Studies (Pitman College - London UK), Management Development for Assistant Certificate – MDEA II (TPSC), Certificate on Secretarial – (VETA Technical College -Mbeya)

#### **Department of Economics and Community Economic Development Staff**

##### ***Head of Department***

Dr. Emmanuel Nyankweli: BSc (Agriculture) (SUA), MA (Rural Development) (SUA), PhD (DS) (University of Amsterdam).

##### ***Associate Professor***

Prof. Deus D. Ngaruko: BSc (Agric. Economics) Makerere University; MSc (Agric. Economics) SUA; DIC (Economics); PhD (Econ) Imperial College London

##### ***Senior Lecturer***

Dr Felician Mutasa: BA (Econ)-UDSM, MA (Public Administration) Carleton, MA (Economic Policy and Planning) (ISS-The Hague); PhD (Econ) UDSM

Dr Christopher Awinia BA (DS); MA (DS) UDSM; PhD (OUT)

Dr. Harriet Mtae: Bsc (Human Nutrition) SUA; MA (Rural development) SUA; PhD (OUT)  
Dr. Emmanuel Nyankweli: BSc (Agriculture) (SUA), MA (Rural Development) (SUA), PhD (DS)  
(University of Amsterdam).  
\*\*\*Dr. Khatibu G.M. Kazungu: BA (Econ) UDSM, MA (Econ) UDSM, PGD (Mgt of Dev), Turin, MSc  
(Econ) Manchester, PhD (Econ) Glasgow

#### **Lecturers**

Dr. Timothy Martin Lyanga: BA (ECON) OUT, MBA OUT, PhD (Econ) OUT  
Dr. Noel Matamba: BA; MA (DS) UDSMA, PhD SUA.  
Dr. Regina Malima: BA (Community Development) (Tengeru), MSc (CED) New Hampshire, PhD (Ds)  
(SUA) Dr. Memba Diploma in Journalism (TSJ), B.A. (PSPA), M.A. (PS & PA) UDSM, Ph.D  
(China)  
Dr. Wambuka Rangi: Bsc. Home Economics and Human Nutrition (SUA), Master of Arts in Rural  
Development (SUA) and PhD in Development Studies (OUT)  
Dr. Edna Lyamuya MA (Agric economics), PhD (Agric Economics) (USSR)

#### **Assistant Lecturers**

Ms Nanzia Toroka: BA (Env. Mngt) Hons; MA (DS) UDSM  
Ms. Rahma Mohamed: BA (UDSM), MA (DS) UDSM  
Mr. Godfrey Gradius: BA Statistics (UDSM), MSc (ECON) OUT  
Mr. Fidelis Kisusi: BA Reg. Dev Planning (IRDP), MA Rural Development (SUA).  
Mr. Abdul Kilima: BA Econ (KIUU), MSc (Applied Economics and Business) Mzumbe  
Ms. Zakia Ituja: BA Reg. Dev Planning (IRDP), MA Demography (UDOM).  
Mr. Henry Tumaini: BA Econ (SAUT), MSc (ECON) OUT  
Ms. Maria Erasmus: BA Econ (Mzumbe), MSc (ECON) OUT  
Ms. Janeth Gwimile: B.Sc. (Computer Sc – Osmania, India), Cert. M& E (MSTCDC, Arusha), M.A.  
M&E (OUT)  
Ms. Josephine Minde: Dip(science) Monduli, Master of Rural Development (SUA)

### **Department of Political Science, Public Administration, History and Philosophy Staff**

#### **Head of Department and Lecturer**

Dr. Jacob J. Lisakafu: BSc. (URP) Hons (UDSM), M.A. (Leipzig), PhD-International Relations and  
Global Studies (Leipzig)

#### **Senior Lecturers**

Dr. Jacob J. Lisakafu: BSc. (URP) Hons (UDSM), M.A. (Leipzig), PhD-International Relations and  
Global Studies (Leipzig)

#### **Lecturers**

Dr. Emmanuel J. Mallya: BA (Ed) (Hons) UDSM; MA (ISS-The Hague), PhD in Social Sciences  
(Minority studies); University of Fernando Pessoa, Porto, Portugal  
Dr. Miraji M. Kitigwa: BAPSPA (Hons); MA IR, PhD (UDSM)

#### **Assistant Lecturers**

Mr. Furaha Julius: BA PS&SO (Hons); MA IR (UDSM)  
Mr. Twaha M. Katabaro: BAPSPA; MA PA (UDSM)  
Mr. Ahmed I. Mussa: BA (Ed), UDSM; BAPA (OUT); MA PA (UDSM)  
\*\*Mr. Elias H. Mseti: BLGM, MPA (Mzumbe)  
\*\*Mr. Revocatus K. Bin'Omukama: BA PSPA; MPA (UDOM)  
\*\*Ms. Hiltruda Mahudi: B.A (History & Arch) Hons.; M.A (Arch), UDSM  
\*\*Rev. Alex Kasisi BA (Divinity) Makumira, MA (Theology) Makumira, PGD(Ed) OUT  
\*\*Mr. Paschal J Mheluka: BA in History (UDSM), PGDE (OUT), MA History (OUT)  
\*\*Mr. Nassor A. Suleiman: Dip (Ed) Zanzibar, BA (Ed) Hons in History (SUZA) Zanzibar, MA Hist.  
(UDSM)  
\*\*Mr. Cosmas Kawonga BA (Ed)(Hons) Dar, MA History (OUT)  
\*\* *Academic Staff on study leave*

### ***Tutorial Assistant***

Manoni Mayalla: BA in History (UDSM)

### **Department of Linguistics and Literary Studies**

#### ***Head of Department and Senior Lecturer***

Dr. Zelda Elisifa: Dip (Ed) Marangu TC, B (Ed). UDSM, MA (Linguistic) UDSM, PhD (Linguistics) – OUT

#### ***Senior Lecturers***

Dr. Dunlop. O. Ochieng; Dip (Ed); B.A (Culture) Hons; M.A (Linguistics) UDSM, PhD (Germany)  
Dr. Zelda Elisifa: Dip (Ed) Marangu TC, B (Ed). UDSM, MA (Linguistic) UDSM, PhD (Linguistics) – OUT

Dr. Hadija Jilala: Dip (Ed); BEd Arts (Hons); M.A (Linguistics), PhD-Kiswahili (UDSM).

#### ***Lecturers***

Dr. Omary Mohamed: B.A (Education) (UDSM); M.A (Kiswahili) (UDSM); M.A Development Studies (UDSM). PhD (Literature) (OUT)

Dr. Salma Hamad: BA (Ed) The State University of Zanzibar; MA (Linguistics) UDSM; PhD (UDSM)

Dr. Jacob Leopard: BA (Ed) (English) UDSM, MA Linguistics, (UDSM) PhD (NENU), China

Dr. Julius Francis; Dipl. (Education) BA (Education); MA (Linguistics), PhD (Linguistics), UDSM

Dr. Nasra Habibu: BA (Ed, Hons); M.A (Kiswahili) UDSM PhD OUT

Dr. Ancyfrida Prosper: BA (Hons), MEd (Western Cape), PhD (Education) (OUT)

#### ***Assistant Lecturers***

Ms. Caroline Mugolozzi: Dipl (ED) Morogoro TC; BAED (DUCE) MA Lit (OUT)

Mr. Bakari Kombo Bakari: Dipl (ED) Nkurumah TTC; BA(Hons) Islamic University Uganda; MA Linguistics (OUT)

Mr. Constantine Njalambaya: BED (Psychology and French) UDSM; MA (DS) University of Geneva

Ms. Elizabeth Kyara: BA (ED) (Linguistics) UDSM; MA (Linguistics) UDSM

Mr. Mosi Mlibwa: BA(ED) (Linguistics + Geography) MUCE, MA (Linguistics) UDSM

Mr. Charles Lazaro: BA (ED) (Kiswahili + Linguistics) STEMMUCO, MA (Linguistics)SAUT.

Mr. Emmanuel Kisika: BA (ED) (Literature & Linguistics) MUCE, MA (Literature) UDSM

Mr. Emmanuel. O. Msangi: BA (Kiswahili) UDOM; MA (Kisw.) OUT

#### ***Tutorial Assistants***

Mr. Faustine D. John: Dip (ED) Marangu TTC, BAED (Literature) OUT

Ms. Frida Mbwafu: Dip (Ed) Korogwe TTC; BED (Linguistic) UDSM

Ms. Theresia Mbogo: BA Kiswa (UDSM), Education (OUT)

Mr. Yohana John: BAED (UDOM), MED APPS (OUT)

### **Department of Geography, Tourism and Hospitality Services**

#### ***Head of Department***

Dr. Halima Kilungu: BSc. Wildlife Management (SUA), MSc. Integrated Water Resources Management (IWRM) UDSM, PhD –Tourism and Environmental Change-Climate: Wageningen University –The Netherlands

#### ***Associate Professors***

Prof. Jumanne D. Kalwani: Dip. (Ed) Dar; B.A. (Ed) Hons; M.A (Demo); PhD (Geography) UDSM.

Prof. Magreth S. Bushesha: BA (Ed), MA, UDSM; PhD (Geography & Environmental Studies), Bradford, UK



### **Senior Lecturers**

- Dr. Emmanuel P. Mhache: B.A (Hons) (Land Use Planning & Environmental Studies); M.A (Geography and Environmental Management) UDSM; PGD–Poverty Analysis REPOA/ISS/ESRF, PGDE-OUT; PhD (Geography)-UDSM.
- Dr. Cosmas B. M. Haule: Dip. (Ed) Korogwe; B.Ed (Hons) UDSM; MSc. Agric. Eng. (Land and Water Management Studies) SUA; Ph.D (Agronomy) SUA
- Dr. Anna Wawa: BSc (Ed) Hons; M.A (Demo) UDSM, PhD (Environment) OUT.

### **Lecturers**

- Dr. Reguli B. Mushy: B.A (Ed) Hons, UDSM; M.A (Geography) UDSM; PGD- Poverty Analysis (REPOA/ISS/ESRF) PhD (Geography) (UDSM).
- Dr. Elieza Y. Musana: Dip. (Ed): B.A (Ed); M.A. (Demo) UDSM, PhD. (OUT)
- Dr. Emmanuel N. Kazuva: B.A. (Ed) OUT; MSc. NARAM (UDSM), PhD (NENU) China
- Dr. Ruth W. John: Dip. (Ed) Butimba TTC; B.A. (Ed) Hons. MA Geography and Environmental Management (UDSM) PhD (UDSM)
- Dr. Halima Kilungu: BSc. Wildlife Management (SUA), MSc. Integrated Water Resources Management (IWRM) UDSM, PhD –Tourism and Environmental and Climate Change: Wageningen University –The Netherlands
- Dr. Fredrick Ladislaus Batinoluho: BSc in Horticulture (SUA); MSc in Protected Landscapes Management (Integrating Conservation and Development), Univ. of Wales, Aberystwyth, UK; MBA Corporate Management (Mzumbe University). PhD (OUT)
- Dr. Thereza Mugobi: BA Tourism and Management, University of Western Cape, Cape Town, SA: MA Economics and Communication (International Tourism), University of Lugano, Switzerland, PhD (OUT)
- Dr. Veronica Nyerere: BA-Tourism (Hons) Makerere; Master of International Business (UDSM), PhD (OUT)

### **Assistant Lecturers**

- Ms. Celia Muyinga BA (Hons) Tourism Management, (Leads UK) MA Tourism Studies with Ecotourism, NAPIER, UNI, Scotland.
- Mr. Michael Patrick: BA-Tourism (Hons) Makerere MSc. Tourism Studies, Mid-Sweden University-Ostersund Sweden
- Mr. Samwel Savunyo
- Ms. Habiba Ally: B.A. (Ed); MSc. (Climate Change) (UDSM)

### **Tutorial Assistant**

- Ms Salome Massawe, BA-Tourism, OUT
- \*\*Mr Reginald Kimario, BSc-Tourism, SUA
- \*\* On study leave

## **Department of Media Studies and Library Services Staff**

### **Head of Department and Lecturer**

- Dr. Henry L Mambo: BA (Public Admn and Intl Relation) Hons, MA Library Science, UK; PhD (Univ of Natal South Africa)

### **Senior Librarians**

- Dr. Henry L Mambo: BA (Public Admn and Intl Relation) Hons, MA Library Science, UK; PhD (Univ of Natal South Africa)
- Dr. Athumani S. Samzugui: BA, MA Library & Information Science (St. Petersburg State Institute of Culture (Russia); PhD. (OUT)

### **Lecturers**

- Dr. Lilian Isowe: Dip. Ed. (Changómbe TTC); BEd Hons (UDSM), MA Information Studies (UDSM), PhD (Moi Univ)

### ***Assistant Lecturers/librarians***

Mr Bujo Ambosisye: BA (Mass Comm), M.A. (Mass Comm) SAUTMs. Kahenga H. Dachi: Dip (Foreign Correspondence in Practice); B.A (P.R. and Advertising), MA (Mass Comm) UDSM.  
Mr. Libe Chonya: Bachelor of Arts in Mass Communication (BAMC), SAUT; Master of Arts in Mass Communication (MAMC), SAU  
Mr. Manning Yusuph B.: Diploma in International Relations & Diplomacy, (Center for Foreign Relations) B.A. Public Relations & Marketing, Master of Arts in Mass Communication (SAUT)  
Mr. Vincent Mpepo: BA, MA (Mass Com) OUT  
Mr. Mugisha Kafuma: BLIS (Makerere - Uganda), MSc.  
Ms. Julieth Msuya: BSc. (Home Economics and Human Nutrition) (SUA); MA Information Studies (UDSM)  
Mr. Nelson Msagati: B.Sc. Food Science and Technology (SUA); M.A. Information Studies (UDSM)  
Ms. Chausiku Mwinyimbegu: Dip. in Librarianship (SLADS), B.Ed. Psychology (UDSM); M.A. Information Studies (UDSM)  
Mr. Aziz H. Kagugu: BLIS (Makerere University); MA. Information Studies (UDSM).  
Mr. Boniface Mbangala: BA (Education) (UDSM), M.A. Information Studies (UDSM).  
Mr. Ntimi Kasumo: BALIS (Tumaini University), MA Information studies (UDSM)  
Mr. Mugisha Kafuma: BLIS (Makerere - Uganda), MSc. Library Science (Northeast Normal University)

### ***Tutorial Assistant***

Husna Nurdin  
Mr. Frank Charles- BALIS (Tumaini University)  
Ms. Elinahamisa Mgaya -BALIS (Tumaini University)  
Mr. Shaban Kangomba-BLIM (The Open University of Tanzania).

## **Department of Sociology and Social Work**

### ***Head of Department and Lecturer***

Dr Mariana Makuu: Advanced Diploma in Social Work (ISW), Master of International Social Welfare and Health Services (Oslo University College, Norway), Doctor of Philosophy in Social Work (University of Botswana).

### ***Lecturers***

Dr. Jacqueline L. Bundala: B.A (Gen), Agra. M.A (Rural Sociology and Community Development). Ph.D. (Sociology), Agra.  
Dr. Fauzia Mohamed: BA-(Hons) Sociology; MA-Sociology (UDSM); PhD-Sociology; L.S.E, U.K  
Dr Mariana Makuu: Advanced Diploma in Social Work (ISW), Master of International Social Welfare and Health Services (Oslo University College, Norway), Doctor of Philosophy in Social Work (University of Botswana).  
Dr Betty D. M. Mntambo: Dip. (Environmental Health Sciences) B.Sc. (Agriculture Education and extension), M.A (Rural Development), Sokoine University of Agriculture. PhD (International Development, University of East Anglia, Norwich, UK)  
Dr. Buhori A. Johnas: B.A (Welfare Science & Development Studies), UNISA, Master of Social Work – University of Botswana; Doctor of Philosophy of The Open University of Tanzania (The OUT)  
Ms. Chitegetse Minanago: B.A (Sociology), (hons); MA (Sociology) UDSM, PhD  
Dr. Straton R. Kakoko: Dipl (Ed) Marangu Teachers' College, Moshi, B.A (Sociology), (hons), MA (Sociology), PhD UDSM

### ***Assistant Lecturers***

\*\*Ms. Atuwene A. Mbelle: B.Ed (Psychology); M.A (ASP) UDSM

Ms. Sipha Yusuf Shaaban: Ordinary Diploma in Gender Issues & Development (Kivukoni Academy of Social Science); BSW (Institute of Social Work); MSW (Open University of Tanzania)

\*\*Alexander Ndibalema Kaija: Certificate in Teaching Grade IIIA (Morogoro); Certificate in Fine Arts & Education (Butimba); BSW (Institute of Social Work); MSW (Open University of Tanzania)

Mzungu, K. Jeddy: Certificate in Medical Laboratory Sciences (Bugando), Ordinary Diploma in Medical Laboratory Sciences, (UDSM), Adv. Diploma in Medical Laboratory Sciences (MUHAS), BASW (OUT).

***Tutorial Assistants***

Mr. Joseph Challe: BSW (Institute of Social Work)

Asia Mwanzi: BSW (Institute of Social Work)

\*\*On study leave

## FASS almanack

<b>Date</b>	<b>Day</b>	<b>Event</b>	<b>Responsible</b>
05-Aug-22	Friday	<b>FASS Board Meeting</b>	<b>DFASS</b>
05-Oct-22	Wednesday	<b>FASS Board Meeting</b>	<b>DFASS</b>
27-Jan-23	Friday	<b>FASS Board Meeting</b>	<b>DFASS</b>
06-Mar-23	Monday	Beginning of SOSW Field Practicum	<b>DFASS</b>
08-Apr-23	Saturday	Field assessments for Journalism and Media Studies Starts	<b>DFASS</b>
13-Apr-23	Thursday	<b>FASS Board Meeting</b>	<b>DFASS</b>
17-Apr-23	Monday	End of SOSW Field Practicum	<b>DFASS</b>
17-Apr-23	Monday	PSPA Field Practicals Ends	<b>DFASS</b>
21-Apr-23	Sunday	Geography Field Practicals Begins	<b>DFASS</b>
08-May-23	Monday	Tourism Field Trip Begins	<b>DFASS</b>
15-May-23	Monday	Tourism Field Trip Ends	<b>DFASS</b>
22-May-23	Sunday	Geography Field Practical Ends	<b>DFASS</b>
30-Jun-23	Friday	Field assessments for Journalism and Media Studies Ends	<b>DFASS</b>

## FASS Programmes Fees

Department of Media and Library Studies						
SN.	Course Name	Course ID	Course Code	Local	EAC (USD)	Non-SADC (USD)
1	News Reporting I	473	OJO 122	120000	80	160
2	Introduction to Media Law and Ethics	479	OJO 123	120000	80	160
3	English for the Media	484	OJO 125	60000	40	80
4	Kiswahili kwa Wanahabari	524	OJO 126	60000	40	80
5	Practicum 1	533	OJO 124	100000	70	140
6	Introduction to Journalism	549	OJO 121	120000	80	160
7	Practicum II	557	OJO 220	200000	140	280
8	News Reporting II	561	OJO 221	120000	80	160
9	Feature and Opinion Writing	564	OJO 222	120000	80	160
10	Photojournalism	567	OJO 223	60000	40	80
11	Media Law and Ethics	568	OJO 224	120000	80	160
12	Editing, Layout and Design	577	OJO 225	120000	80	160
13	Media Research	653	OJO 226	120000	80	160
14	Broadcasting: Radio and Television	658	OJO 227	120000	80	160
15	Practicum III	661	OJO 320	100000	70	140
16	Specialized Reporting: Edutainment, Court Reporting, Political Reporting, Business Reporting and Gender	666	OJO 321N	120000	80	160
17	New Media Technologies	671	OJO 322	120000	80	160
18	Media Management	676	OJO 323	120000	80	160
19	Investigative Journalism	678	OJO 324N	120000	80	160
20	Dissertation	691	OJO 325N	500000	350	700
21	Introduction to library and Information Science.	692	OLM 101	120000	80	160
22	Organization of Knowledge	705	OLM 601	120000	80	160
23	Information sources and Reference services	706	OLM 102	120000	80	160
24	Information Society	716	OLM 103	120000	80	160
25	Organization of knowledge	722	OLM 104	120000	80	160
26	Fundamentals of Library and Information Management	723	OLM 600	120000	80	160
27	Introduction to Mass Communication	726	OMC 121	120000	80	160
28	News Reporting I	727	OMC 122	120000	80	160
29	Information and Communication Technology Applications in LIS	733	OLM 602	360000	200	400
30	Records Management and Archival Administration	736	OLM 603	360000	200	400
31	Management of Library and Information Centers	741	OLM 604	360000	200	400
32	Research Methodology	746	OLM 605	360000	200	400
33	Information Technology and its application in LIS	754	OLM 201	120000	80	160
34	Dissertation	761	OLM 699	1080000	600	1200
35	Principles and Practices of Records Management	763	OLM 202	120000	80	160
36	Collection Development and Management	770	OLM 203	120000	80	160
37	Research Methods in Library and Information Sciences	771	OLM 204	120000	80	160

38	Publishing and Book Trade Industry	773	OLM 205	120000	80	160
39	Practicum	775	OLM 206	200000	140	280
40	Introduction to Media Law and Ethics	777	OMC 123	120000	80	160
41	Information Systems Analysis, Design and Evaluation	787	OLM 207	120000	80	160
42	Practicum 1	791	OMC 124	100000	70	140
43	Multimedia Studies	793	OLM 208	120000	80	160
44	Multimedia Studies	794	OLM208	120000	80	160
45	English for the Media	796	OMC 125	60000	40	80
46	Information and Knowledge Management	798	OLM 301	120000	80	160
47	Kiswahili kwa Wanahabari	799	OMC 126	60000	40	80
48	Management of Libraries and Information Centers	800	OLM302	120000	80	160
49	Research Methodology	804	OLM 605	360000	200	400
50	Legal Issues and Professional Ethics in LIS	806	OLM 303	120000	80	160
51	Entrepreneurship and Information marketing	808	OLM 304	120000	80	160
52	Digital libraries	809	OLM305	120000	80	160
53	Research Project	810	OLM 306	120000	80	160
54	Information Systems and Services for people with special needs	811	OLM307	120000	80	160
55	Database design, Management and Information Retrieval	814	OLM308	120000	80	160
56	Practicum III	816	OMC 220	60000	40	80
57	News Reporting II	817	OMC 221	120000	80	160
58	International Issues in Mass Communication	819	OMC 222	60000	40	80
59	Advertising I	830	OMC 223	60000	40	80
60	Media Law and Ethics	832	OMC 224	120000	80	160
61	Editing, Layout and Design	833	OMC 225	120000	80	160
62	Media Research	834	OMC 226	120000	80	160
63	Broadcasting: Radio and Television	836	OMC 227	120000	80	160
64	Specialized Reporting: HIV/AIDS or Local Government or Environment	838	OMC 228	120000	80	160
65	Public Relations	840	OMC 229	120000	80	160
66	Practicum III	843	OMC 320	200000	140	280
67	Specialized Reporting: Edutainment, Court Reporting, Political Reporting, Business Reporting and Gender	853	OMC 321	120000	80	160
68	New Media Technologies	855	OMC 322	120000	80	160
69	Media Management	858	OMC 323	120000	80	160
70	Public Relations II	861	OMC 324	120000	80	160
71	Dissertation	867	OMC 325	500000	350	700
72	Advertising II	870	OMC 326	120000	80	160
73	Mass Communication Theories and Models	886	OMC 600	360000	200	400
74	Mass Communication Regulations	890	OMC 601	360000	200	400
75	Mass Communication Ethics	893	OMC 602	360000	200	400
76	Public Opinion and Media	895	OMC 603	360000	200	400
77	Advanced Mass Communication Research Methodology	900	OMC 604	360000	200	400
78	Dissertation	1043	OMC 605	1080000	600	1200
79	Strategic Corporate Communication	1045	OMC 607	120000	80	160
80	Specialized Reporting: HIV/AIDS or Local Government or Environment	1077	OJO 228N	120000	80	160

81	Mass Communication Planning and Management	1439	OMC 606	360000	200	400
<b>Department of Geography, Tourism and Hospitality Studies</b>						
SN.	Course Name	Course ID	Course Code	Local	EAC (USD)	Non-SADC (USD)
1	Climatology studies	21	OGC 201	120000	80	160
2	Introduction to tourism	494	OTM 101	120000	80	160
3	Fundamentals of Wildlife Ecology	497	OTM 102	120000	80	160
4	Integrated hospitality operations	499	OTM 103	120000	80	160
5	Special Interest Tourism	508	OTM 104	120000	80	160
6	Leisure and Recreation Tourism	515	OTM 105	120000	80	160
7	Culture and Heritage Tourism	520	OTM 201	120000	80	160
8	Tourism Statistics and Economics	525	OTM 202	120000	80	160
9	Tourism policy and planning	528	OTM 203	120000	80	160
10	Tourism Marketing and Promotion	532	OTM 204	120000	80	160
11	Sustainable Tourism Development	534	OTM 205	120000	80	160
12	Events Planning and Management	540	OTM 301	120000	80	160
13	Travel and Tour Operations Management	541	OTM 302	120000	80	160
14	Tourism Entrepreneurship	542	OTM 303	120000	80	160
15	Tourism Field Study	546	OTM 305A	200000	140	280
16	Tourism Internship	548	OTM 305B	200000	140	280
17	Special Project	550	OTM 305C	200000	140	280
18	Theories and Practice of Tourism	559	OTM 601	360000	200	400
19	Tourism Policy and Planning	569	OTM 602	360000	200	400
20	Approaches to Hospitality Management	570	OTM 603	360000	200	400
21	Tourism and Hospitality Entrepreneurship	571	OTM 604	360000	200	400
22	Tourism Marketing and Promotion	572	OTM 605	360000	200	400
23	Sustainable Tourism Development Management	574	OTM 606	360000	200	400
24	Advanced Tourism Research Methods & Dissertation	575	OTM 608	1080000	400	800
25	Introduction to Population Studies	578	OPD 101	120000	80	160
26	Introduction to Population Studies	579	OPD 102	120000	80	160
27	Introduction to Reproductive and Sexual Health	580	OPD 103	120000	80	160
28	Medical Geography	581	OPD 104	120000	80	160
29	Dynamics of Population Structure	582	OPD 201	120000	80	160
30	Basic Demographic Methods	583	OPD 203	120000	80	160
31	Gender, Health and Family Planning	584	OPD 301	120000	80	160
32	GIS and Population Studies	585	OPD 302	120000	80	160
33	GIS and Population Studies	586	OPD 302.	120000	80	160
34	GIS and Population Studies	587	OPD-302	120000	80	160
35	Population Policy and Development	588	OPD 303	120000	80	160
36	Population Migration and Development	589	OPD 304	120000	80	160
37	Family Resources Management	590	OPD 305	120000	80	160
38	Urban Systems, Planning and Management	591	OPD 306	120000	80	160
39	Population, Environment and Development	592	OPD 307	120000	80	160
40	Population, Environment and Development	593	OPD-307	120000	80	160
41	Nutrition for Health	594	OPD 308	120000	80	160
42	African Environment and Development	595	OPD 309	120000	80	160

43	Rural Settlement and Development	596	OPD 310	120000	80	160
44	Gender and Development	598	OPD_202	120000	80	160
45	Background to Natural Resources	599	ORM 101	120000	80	160
46	Introduction to Population, Resources and Development	600	ORM 102	120000	80	160
47	Introduction to Geographic Techniques	601	ORM 103	120000	80	160
48	Climatology	602	ORM 104	120000	80	160
49	Introduction to Human Geography	603	ORM 105	120000	80	160
50	Gender and Natural Resources Management	604	ORM 106	120000	80	160
51	Mineral and Energy Resources	605	ORM 201	120000	80	160
52	Mineral and Energy Resources	606	ORM-201	120000	80	160
53	Remote Sensing and Geographical Information Systems	607	ORM 202	120000	80	160
54	Social Research Methods in Geography	608	ORM 203	120000	80	160
55	Geography Field Practicals	609	ORM 204	200000	140	280
56	Environmental and Natural Disasters Management	610	ORM 205	120000	80	160
57	Population and Poverty Studies	611	ORM 206	120000	80	160
58	Urban Planning and Management	612	ORM 207	120000	80	160
59	Ecology of Natural Resources	613	ORM 208	120000	80	160
60	Environmental Economics	614	ORM 301	120000	80	160
61	Policy Issues in Natural Resources Management	615	ORM 302	120000	80	160
62	Environmental Impact Assessment	616	ORM 303	120000	80	160
63	Climate Change and Environmental Resources Management	618	ORM 304	120000	80	160
64	Biodiversity Monitoring, Conservation and Management	619	ORM 305	120000	80	160
65	Land Evaluation and Land Use Planning	620	ORM 306	120000	80	160
66	Geography Field Practicals	621	OPD 209	200000	140	280
67	Contemporary Issues in Natural resources Assessment and Management	686	ORM 601	360000	200	400
68	Environmental and Natural Resources Economics	690	ORM 602	360000	200	400
69	Environmental and Social Impact Assessment	693	ORM 603	360000	200	400
70	Population Dynamics and Natural Resources Management	695	ORM 604	360000	200	400
71	Applied GIS and Remote Sensing for Natural Resources Assessment f	697	ORM 605	360000	200	400
72	Research Methodology and Techniques in Natural Resources Assessment	701	ORM 606	360000	200	400
73	Biodiversity Conservation and Ecosystem Services	704	ORM 609	360000	200	400
74	Dissertation	708	ORM 699	720000	400	800
75	Background to Physical Resources	1533	OGE 121	120000	80	160
76	Introduction to Human Geography	1534	OGE 122	120000	80	160
77	Introduction to Geographical Techniques	1535	OGE 123	120000	80	160
78	Physical Resources	1536	OGE 221	120000	80	160
79	Remote Sensing and Quantitative Methods in Geography	1537	OGE 223	120000	80	160
80	Population and Development	1538	OGE 225	120000	80	160
81	Geography Field Practicals	1539	OGE 229	200000	140	280
82	Population, Resources and Development	1540	OGE 322	120000	80	160



83	The African Environment and Development	1541	OGE 326	120000	80	160
<b>Department of Linguistics and Literary Studies</b>						
<b>SN.</b>	<b>Course Name</b>	<b>Course ID</b>	<b>Course Code</b>	<b>Local</b>	<b>EAC (USD)</b>	<b>Non SADC (USD)</b>
1	Introduction to Language and Linguistics (Kiswahili)	119	OSW 131	120000	80	160
2	History and Dialects of Swahili	120	OSW 132	120000	80	160
3	Theory of Kiswahili Literature and Criticism	121	OSW 133	120000	80	160
4	Theory and Practice of Translation	122	OSW 134	120000	80	160
5	Kiswahili Grammar and Syntax	126	OSW 231	120000	80	160
6	Kiswahili Phonetics and Phonology	127	OSW 232	120000	80	160
7	Kiswahili Morphology	128	OSW 233	120000	80	160
8	Kiswahili Oral Literature	129	OSW 234	120000	80	160
9	Research Methods in Language Studies	130	OSW 235	120000	80	160
10	Kiswahili Semantics	131	OSW 236	120000	80	160
11	Creative Writing and Screen Writing	132	OSW 237	120000	80	160
12	Lexicography	133	OSW 238	120000	80	160
13	Swahili Comparative Literature	134	OSW 239	120000	80	160
14	Kiswahili Novel	135	OSW 331	120000	80	160
15	Kiswahili Drama	136	OSW 332	120000	80	160
16	Kiswahili Poetry	137	OSW 333	120000	80	160
17	Film Criticism	138	OSW 334	120000	80	160
18	Kiswahili Sociolinguistics	139	OSW 335	120000	80	160
19	Research Project in Kiswahili	140	OSW 336	200000	140	280
20	Literary Stylistics	141	OSW 337	120000	80	160
21	Introduction to Language and Linguistics	142	OLL 131	120000	80	160
22	English Structure	143	OLL 132	120000	80	160
23	Literary Theory and Criticism	144	OLT 131	120000	80	160
24	Studies in African Literatures	145	OLT 132	120000	80	160
25	Phonetics and Phonology	274	OLL 235	120000	80	160
26	Introduction to Functional Grammar	437	OLL 133	120000	80	160
27	Language Contact	438	OLL 134	120000	80	160
28	Language Acquisition Theories	439	OLL 135	120000	80	160
29	History and Development of English	440	OLL 136	120000	80	160
30	Semantics and Pragmatics	441	OLL 335	120000	80	160
31	Discourse Analysis	442	OLL 231	120000	80	160
32	Morphology	443	OLL 232	120000	80	160
33	Introduction to Syntax	444	OLL 233	120000	80	160
34	History and Comparative Linguistics	445	OLL 234	120000	80	160
35	Language and Literature	446	OLT 133	120000	80	160
36	Applied Linguistics	447	OLL 236	120000	80	160
37	Translation Theory and Practice	448	OLL 237	120000	80	160
38	Lexicography	449	OLL 238	120000	80	160
39	Contemporary Linguistics Theories	450	OLL 331	120000	80	160
40	Language and Gender	451	OLL 332N	120000	80	160
41	Sociolinguistics	452	OLL 333N	120000	80	160
42	Research Methodology	453	OLL 334	120000	80	160
43	Semantics and Pragmatics	454	OLL 335N	120000	80	160
44	Advanced English Syntax	455	OLL 336N	120000	80	160

45	Research Project in Translation/Linguistics	456	OLL 337	200000	140	240
46	Creative Writing for Fiction	498	OLT 134	120000	80	160
47	Introduction to Drama	500	OLT 135	120000	80	160
48	African Woman Writers	501	OLT 136	120000	80	160
49	Literary Stylistics	504	OLT 231	120000	80	160
50	Poetry	505	OLT 232	120000	80	160
51	Folklore and Oral Literature	507	OLT 233	120000	80	160
52	Research Methodology	510	OLT 234	120000	80	160
53	Rise of the Novel	511	OLT 235	120000	80	160
54	Contemporary Trends in African Literature	512	OLT 236	120000	80	160
55	Introduction to Film Studies	514	OLT 237	120000	80	160
56	Comparative Literature	516	OLT 331	120000	80	160
57	African American Literature	519	OLT 332	120000	80	160
58	Studies in European Literature	523	OLT 333	120000	80	160
59	Gender and Literature	526	OLT 334	120000	80	160
60	The Short Story	527	OLT 335	120000	80	160
61	Creative Writing Project	535	OLT 337	200000	140	280
62	Research Project	543	OLT 336	200000	140	280
63	Classical & Modern Poetry	622	OSW 601	360000	200	400
64	Thesis writing	623	OSW 617	1080000	600	1200
65	Kiswahili Drama	624	OSW 602	360000	200	400
66	Research Methodology	625	OSW 616	360000	200	400
67	Kiswahili Novel	626	OSW 603	360000	200	400
68	Kiswahili Lexicography	627	OSW 615	360000	200	400
69	Translation: Theory and Practice	628	OSW 614	360000	200	400
70	Social Linguistics	629	OSW 613	360000	200	400
71	Theories of Literary Criticism	630	OSW 604	360000	200	400
72	History of Kiswahili Dialect	632	OSW 612	360000	200	400
73	A Selected Author	633	OSW 605	360000	200	400
74	Kiswahili Semantics	634	OSW 611	360000	200	400
75	Oral Literature	635	OSW 606	360000	200	400
76	Kiswahili Syntax	636	OSW 610	360000	200	400
77	Kiswahili Morphology	637	OSW 609	360000	200	400
78	Kiswahili Phonology	638	OSW 608	360000	200	400
79	Film Criticism	639	OSW 607	360000	200	400
80	French for Beginners	996	FR 1	120000	200	400
81	French Intermediate Level	997	FR 2	120000	200	400

**Department of Sociology and Social Work**

<b>SN.</b>	<b>Course Name</b>	<b>Course ID</b>	<b>Course Code</b>	<b>Local</b>	<b>EAC (USD)</b>	<b>Non-SADC (USD)</b>
1	Introduction to Social Psychology	118	OSS 124	120000	80	160
2	Basics of Social Work	457	SWT 04101	60000	40	80
3	Social Work Values and Ethics	458	SWT 04102	60000	40	80
4	Information Communication Technology in Social Work	459	SWT 04103	60000	40	80
5	Social Work Practice in Health Care	460	SWT 04204	60000	40	80
6	Social Psychology for Social Workers	461	SWT	60000	40	80

			04205			
7	Fundamentals of Sociology	463	SWT 04106	60000	40	80
8	Human Rights and Gender in Social work Practice	464	SWT 04207	60000	40	80
9	Fundamentals of Social Empowerment	466	SWT 04208	60000	40	80
10	Psychology for Social Workers	468	SWT 04109	60000	40	80
11	Social Welfare Services	469	SWT 04110	60000	40	80
12	Basics of Social Work Field Instructions	470	SWT 04211	60000	40	80
13	Introduction to Social Work	471	OSP 101	120000	80	160
14	Block Field Work Practice	472	SWT 04212	200000	140	280
15	Social Work Professional Ethics	475	OSP 102	120000	80	160
16	Social Work Research Methods I	477	OSP 103	120000	80	160
17	Psychology for Social Workers	478	OSP 104	120000	80	160
18	Human Behaviour and Social Environment	481	OSP 201	120000	80	160
19	Empowering Marginalized Populations	487	OSP 202	120000	80	160
20	Introduction to Social Welfare Policies	502	OSP 203	120000	80	160
21	Social Work Practice with Individuals and Families	503	OSP 204	120000	80	160
22	Social Work Practice with Groups	506	OSP 205	120000	80	160
23	Social Work Practice with Organization	509	OSP 206	120000	80	160
24	Social Work Practice with Communities	513	OSP 207	120000	80	160
25	Introduction to Field Practice	518	OSP 208	200000	140	280
26	Social Welfare Policy, Analysis and Evaluation	522	OSP 301	120000	80	160
27	Block Field Practice	538	OSP 304	200000	140	280
28	Social Work Research Methods II	547	OSP 302	120000	80	160
29	Social Work Research Project	553	OSP 303	200000	140	280
30	Communication skills	839	SWT 05101	60000	40	80
31	Guidance and Counselling	841	SWT 05102	120000	80	160
32	Advanced Clinical Social Work	1057	OSP 602	360000	200	400
33	Advanced Administrative and Community Social Work	1058	OSP 603	360000	200	400
34	Advanced Social Welfare Services	1059	OSP 604	360000	200	400
35	Advanced Social Work Research	1060	OSP 605	360000	200	400
36	Advanced Field Practice	1061	OSP 606	420000	280	560
37	Dissertation	1062	OSP 607	1080000	600	1200
38	Leadership with Children and Families Services	1063	OSP 610	360000	200	400
39	Leadership in Health Services	1064	OSP 611	360000	200	400
40	Leadership in Development & Emergency Response	1065	OSP 612	360000	200	400
41	Leadership in Social Work Education	1066	OSP 613	360000	200	400
42	Social Work Professional Ethics	1069	OSP 501	360000	200	400
43	Human Behaviour and the Social Environment	1070	OSP 503	360000	200	400
44	Social Work Practice with Individuals	1071	OSP 504	360000	200	400

45	Social Work Practice with Organizations	1072	OSP 506	360000	200	400
46	Introduction to Field Practice	1073	OSP 508	360000	200	400
47	Social Welfare Policy Analysis and Evaluation	1074	OSP 509	360000	200	400
48	Field Practice (Block)	1075	OSP 510	420000	280	560
49	Feminist/Gender Theories	1201	OGS 600	360000	200	400
50	Principles of Gender Construction, Deconstruction & Gender Mainstreaming	1202	OGS 601	360000	200	400
51	Gender and Development	1203	OGS 603	360000	200	400
52	Gender Research Methodology	1204	OGS 604N	360000	200	400
53	Gender, Technology & Education	1205	OGS 605	360000	200	400
54	Gender, Health & Social Issues	1206	OGS 606	360000	200	400
55	Gender, Food and Environment	1207	OGS 607	360000	200	400
56	Gender Language, Literature & Culture	1208	OGS 608	360000	200	400
57	Gender & Community Economics	1213	OGS 602	360000	200	400
58	Dissertation	1217	OGS 614N	1080000	600	1200
59	Introduction to Sociology	1251	OSS 121	120000	80	160
60	Introduction to Social Science Research Methods	1252	OSS 122	120000	80	160
61	Classical Sociological Theory	1253	OSS 123	120000	80	160
62	Critical Thinking and Argumentation	1293	OSS 125	120000	80	160
63	Contemporary Sociological Theory	1294	OSS 221	120000	80	160
64	Social Science Research Methods	1295	OSS 222	120000	80	160
65	Field Practice	1296	OSS 223	200000	140	280
66	Cultural Anthropology	1297	OSS 224	120000	80	160
67	Medical Sociology	1424	OSS 225	120000	80	160
68	Population and Development	1425	OSS 226	120000	80	160
69	Introduction to Social Policies	1426	OSS 227	120000	80	160
70	Community Development	1427	OSS 228	120000	80	160
71	Social Welfare Services	1428	OSS 229	120000	80	160
72	Sociology of Knowledge	1429	OSS 321	120000	80	160
73	Poverty, Wealth and Inequality	1430	OSS 322	120000	80	160
74	Globalization and Social Problems	1431	OSS 323	120000	80	160
75	Health Systems in Tanzania	1432	OSS 325	120000	80	160
76	Reproductive Health	1433	OSS 326	120000	80	160
77	Social Policy Analysis	1434	OSS 327	120000	80	160
78	Gender and Development	1435	OSS 328	120000	80	160
79	Social Planning and Evaluation	1436	OSS 329	120000	80	160
80	Stratification, Class and Health	1437	OSS 330	120000	80	160
81	Introduction to Sociology and Anthropology	1438	OSS 102	120000	80	160
82	Social Work and Law	1480	SWT 05209	180000	100	200
83	Applied Social Welfare Laws	1481	SWT 06202	180000	100	200
84	Social Welfare Policy and Services	1482	SWT 05103	180000	100	200
85	Social Work Practice	1483	SWT 05104	100000	70	140
86	Basic Statistics for Social Workers	1484	SWT 05105	180000	100	200
87	Social Work Case Management	1485	SWT 05106	180000	100	200
88	Introduction to Entrepreneurship skills	1486	SWT05207	180000	100	200

89	Social Advocacy and Empowerment	1487	SWT 05208	180000	100	200
90	Social policy	1488	SWT06101	180000	100	200
91	Resource mobilization for social welfare services	1489	SWT06103	180000	100	200
92	Rehabilitation services in social work practice	1501	SWT06104	180000	100	200
93	Administration of social welfare resources	1502	SWT06107	180000	100	200
94	Social Work best practices	1503	SWT06108	180000	100	200
95	Basic Leadership and Administration Skills	1504	SWT06109	180000	100	200
96	Social Work Research Methods	1505	SWT06205	180000	100	200
97	Social Work interventions in HIV and AIDS	1506	SWT06210	180000	100	200
98	Quality Assurance & Improvement in Social Welfare Services	1507	SWT06211	180000	100	200
99	Social Advocacy and Empowerment	1508	SWT05208	180000	100	200
100	Block Field Work Practice	1526	SWT05211	200000	140	280
101	Social Work Field Instruction	1531	SWT05210	180000	100	200
102	Block Field Practice	1532	SWT06212	200000	140	280

**Department of Economics and Community Economic Development**

SN.	Course Name	Course ID	Course Code	Local	EAC (USD)	Non SADC (USD)
1	History of Economics Thought	462	OEC 130	120000	80	160
2	Introduction to Microeconomics	465	OEC 131	120000	80	160
3	Introduction to Macroeconomics	467	OEC 132	120000	80	160
4	Basic Mathematics and Statistics for Economists	474	OEC 133	120000	80	160
5	Social Science Research Methods	480	OEC 134	120000	80	160
6	Intermediate Microeconomics	482	OEC 230	120000	80	160
7	Intermediate Macroeconomics	483	OEC 231	120000	80	160
8	Development Economics	485	OEC 232	120000	80	160
9	Quantitative Methods for Economists	486	OEC 233	120000	80	160
10	Econometrics	488	OEC 234	120000	80	160
11	Corporate Finance and Investments	489	OEC 235	120000	80	160
12	Monetary Economics	490	OEC 330	120000	80	160
13	International Economics	491	OEC 331	120000	80	160
14	Public Economics	492	OEC 332	120000	80	160
15	Industrial Economics	493	OEC 333	120000	80	160
16	Labour Economics	495	OEC 334	120000	80	160
17	Agricultural Economics	496	OEC 335	120000	80	160
18	Fundamentals of Project Planning and Management	517	OEC 620	360000	200	400
19	Advanced Microeconomics	521	OEC 600	360000	200	400
20	Advanced Macroeconomics	529	OEC 601	360000	200	400
21	Principles and Practices of Monitoring and Evaluation	530	OEC 621	360000	200	400
22	Advanced Mathematics	531	OEC 602	360000	200	400
23	Advanced Econometrics	536	OEC 603	360000	200	400
24	Research Methods and Statistics for Impact Evaluation	537	OEC 622	360000	200	400
25	Macroeconomic Policy for Developing Countries	539	OEC 604	360000	200	400
26	Planning for Monitoring and Evaluation	544	OEC 623	360000	200	400

	System					
27	International Economics	545	OEC 605	360000	200	400
28	Designing for Monitoring and Evaluation System	551	OEC 624	360000	200	400
29	Monetary Economics	552	OEC 606	360000	200	400
30	Public Economics	554	OEC 607	360000	200	400
31	Cost Benefit Analysis	555	OEC 625	360000	200	400
32	Development Economics	556	OEC 608	360000	200	400
33	Financial Economics	558	OEC 609	360000	200	400
34	Economics of Money, Banking and Financial Markets	560	OEC 610	360000	200	400
35	Risk Management in Monitoring and Evaluation	562	OEC 626	360000	200	400
36	Environmental and Social Impact Assessment	563	OEC 627	360000	200	400
37	Research Design and Methods for Economics	565	OEC 613	360000	200	400
38	Environmental Economics	566	OEC 611	360000	200	400
39	Dissertation	573	OEC 699	1080000	600	1200
40	Resource Mobilization and Management for CED Projects	694	CED 222	120000	80	160
41	Rural Livelihoods and Sustainable Development	715	CED 325	120000	80	160
42	Project Monitoring and Evaluation	728	CED 321	120000	80	160
43	Organizational Management for CED	737	CED 225	120000	80	160
44	CED Project Management	739	CED 224	120000	80	160
45	Poverty Analysis and Intervention	745	CED 223	120000	80	160
46	Resource Mobilization and Management for CED Projects	751	CED 222	120000	80	160
47	Microfinance Management	755	CED 221	120000	80	160
48	SMEs and Development	760	CED 123	120000	80	160
49	Economics for CED	762	CED 122	120000	80	160
50	Principles of CED	764	CED 121	120000	80	160
51	Gender Issues in CED	801	CED 306	120000	80	160
52	Development as a Tool for Conflict Resolution	803	CED 324	120000	80	160
53	Sustainable Responses to Environmental Problems	805	CED 323	120000	80	160
54	Community Needs Assessment	807	CED 322	120000	80	160
55	Concepts and theories of Development	812	ODS 101A	60000	40	80
56	Political and Social Development	813	ODS 101C	120000	80	160
57	Fundamentals of Result Based Project	1003	OEC 011	120000	80	160
58	M&E Principles and Approaches	1005	OEC 012	120000	80	160
59	M&E Planning and Implementation	1006	OEC 013	120000	80	160
60	Applied Mathematics for Project	1008	OEC 014	120000	80	160
61	Impact Evaluation Methods	1009	OEC 021	120000	80	160
62	Field protocol & report writing	1010	OEC 022	120000	80	160
63	M&E in Public Sector	1011	OEC 023	120000	80	160
64	Evaluation Criteria and Techniques	1012	OEC 024	120000	80	160
65	Value for Money in M&E	1013	OEC 025	120000	80	160
66	M&E Data Management and Systems	1015	OEC 026	120000	80	160
67	Field Practical Attachment	1016	OEC 099	200000	140	280
68	Delete-Field Practical Attachment	1023	199	400000	280	560
69	Field Practical Attachment	1025	OEC 199	400000	280	560

70	Principles and Practice of CED	1035	CED 631	360000	200	400
71	Economics for CED	1039	CED 632	360000	200	400
72	Organizational Management for Community Organizations	1040	CED 633	360000	200	400
73	Advanced Research Methodology for Social Scientists	1042	CED 634	360000	200	400
74	Microenterprise Development for CED	1044	CED 635	360000	200	400
75	Project Design and Management for CED	1046	CED 636	360000	200	400
76	Sustainable Responses to Environmental Problems	1048	CED 637	360000	200	400
77	Gender Issues in CED	1049	CED 638	360000	200	400
78	MCED Dissertation Writing Skills	1050	CED 699	1080000	600	1200
79	Concepts and Theories of Development	1067	ODS 101 A	120000	80	160
80	Introduction to Project Design and Management	1519	OEC 001	120000	80	160
81	Monitoring and Evaluation Framework	1520	OEC 002	120000	80	160
82	Social Science Research methods	1521	OEC 003	120000	80	160
83	Basic Statistics for M&E	1522	OEC 004	120000	80	160
84	Field Work Management	1523	OEC 005	120000	80	160
85	M&E Ethics and Gender Aspects	1524	OEC 006	120000	80	160
86	M&E Group Project	1525	OEC 007	400000	280	560
87	Mathematics and Statistics for Economists	1550	OEC 123	120000	80	160
88	Gender issues in CED	1551	CED 326	120000	80	160
<b>Department of Political Science, Public Administration, History and Philosophy</b>						
SN.	Course Name	Course ID	Course Code	Local	EAC (USD)	Non-SADC (USD)
1	Advanced Political theory	631	OPS 601	360000	200	400
2	Introduction to African History	640	OHI 131	120000	80	160
3	History of Tanzania to the Recent Past	641	OHI 132	120000	80	160
4	International Cooperation and Development Policies	642	OIR 601	360000	200	400
5	Governance, Leadership and Development	643	OPS 602	360000	200	400
6	Advanced Research methodology	644	OPS 603	360000	200	400
7	International Politics and Security	645	OIR 602	360000	200	400
8	Leadership Ethics and Public Accountability	646	OPS 604	360000	200	400
9	Political Parties, Democracy and Elections	647	OPS 605	360000	200	400
10	Organization Behaviour	648	OPS 606	360000	200	400
11	Advanced Public Policy Analysis	649	OPS 607	360000	200	400
12	Advanced Political Theory	650	OPS601	360000	200	400
13	Theory ana Practice in Africa History	651	OHI 133	120000	80	160
14	Strategic Human Resource Management	652	OPS 608	360000	200	400
15	Advanced Public Administrative Law	655	OPS 609	360000	200	400
16	Advanced Research methodology	656	OPS 603	360000	200	400
17	Advanced Study to Conflict and Crisis Management	657	OPS 610	360000	200	400
18	African International Relations and Diplomacy	659	OIR 604	360000	200	400
19	Dissertation	662	OPS 699	1080000	600	1200
20	International Political Economy	663	OIR 603	360000	200	400
21	Public International Law	665	OIR605	360000	200	400

22	Crisis, Reconstruction and Development	673	OHA 601	360000	200	400
23	Strategic Management of NGOs and Humanitarian Missions	674	OHA 602	360000	200	400
24	Public Health and Humanitarian Issues	677	OHA 603	360000	200	400
25	Introduction to Public Administration	681	OPA 101	120000	80	160
26	Organization Theory and Public Bureaucracies	684	OPA 102	120000	80	160
27	The Political History of Zanzibar	687	OHI 134	120000	80	160
28	Local Government Administration in Tanzania	688	OPA 103	120000	80	160
29	Administrative Law	711	OPA 201	180000	100	200
30	Decision Making Law and Public Policy Analysis	714	OPA 202	120000	80	160
31	Management of Human Resources	717	OPA 203	180000	100	200
32	Organization Behaviour	719	OPA 204	120000	80	160
33	Themes in African Prehistory	720	OHI 135	120000	80	160
34	Budgeting and Financial Control in the Public Sector	730	OPA 301	180000	100	200
35	History of East Africa to the Recent Past	731	OHI 231	120000	80	160
36	Leadership and Governance	734	OPA 302	180000	100	200
37	Industrial Relations	738	OPA 303	300000	70	210
38	Strategic Management	742	OPA 304	180000	100	200
39	Comparative Public Administration	747	OPA 305	180000	100	200
40	History of West Africa	748	OHI 232	120000	80	160
41	Democracy and Human Rights	752	OPS 320	120000	80	160
42	Government and Politics in Africa	757	OPS 122	120000	80	160
43	Europe Since the 19th Century	765	OHI 233	120000	80	160
44	Introduction to the Study of Politics	767	OIR 101	120000	80	160
45	Field Work/Industrial Attachment	769	OIA 200	120000	80	160
46	History of Southern Africa	772	OHI 235	120000	80	160
47	Public International Law	802	OIR 605	360000	200	400
48	Public Health and Humanitarian Issues	815	OHA 603	360000	200	400
49	Europe Since the 19th Century	827	OHI 236	120000	80	160
50	History of West Africa	1037	OHI 332	120000	80	160
51	History of North Africa	1051	OHI 333	120000	80	160
52	The Black Diaspora in the Indian Ocean	1068	OHI 331	120000	80	160
53	Introduction to Critical Thinking and Argumentation	1440	OPR 121	120000	80	160
54	Political Thought	1490	OIR 102	120000	80	160
55	Africa in the Global Context	1491	OIR 103	120000	80	160
56	International Organizations	1492	OIR 104	120000	80	160
57	Theories and Issues in International Relations	1493	OIR 201	180000	100	200
58	International Political Economy	1494	OIR 202	180000	100	200
59	Public International Law	1495	OIR 203	180000	100	200
60	Foreign Policy and Diplomacy	1496	OIR 204	120000	80	160
61	Global Governance	1497	OIR 301	180000	100	200
62	Contemporary Issues in Global Politics	1498	OIR 302	180000	100	200
63	Regional Integration	1499	OIR 303	180000	100	200
64	Politics of Conflict Resolution	1500	OIR 304	180000	100	200
65	Religious Phenomena	1554	OPR 124	120000	80	160
66	Religious in Public Life	1555	OPR 125	120000	80	160
67	Religion and Development	1556	OPR 126	120000	80	160



68	Philosophy of Religion	1557	OPR 221	120000	80	160
69	Interreligious Peace and Reconciliation	1558	OPR 224	120000	80	160